

Nrf 2 Rabbit Polyclonal Antibody(F291)**Catalog No.: RA20202****Basic Information****Information**

Reactivity	H,M,R
Immunogen	Recombinant Protein
Host	Rabbit
Isotype	IgG
Storage Buffer & Condition	1mg/ml in PBS, pH 7.4, containing 0.02% sodium azide and 50% glycerol.
Observed MW	75-100KD

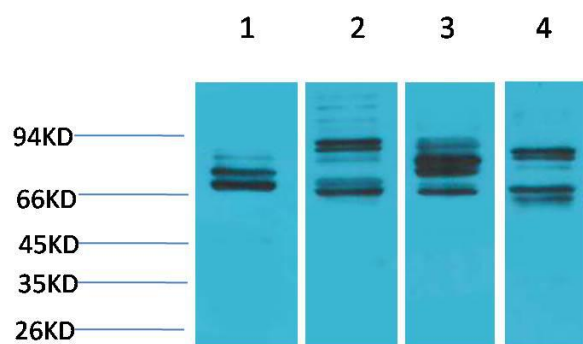
Applications**Recommended Dilution**

WB	1:1,000-2,000
IHC	1:100-200

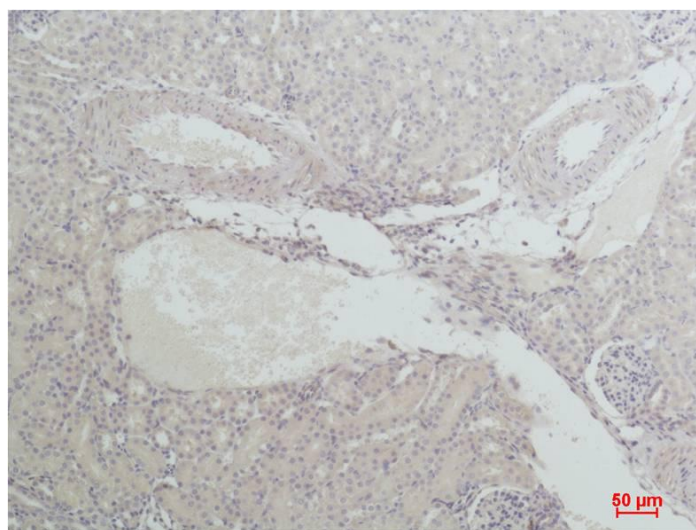
Preparation & Storage

Storage	Store at -20°C. Stable for one year from the date of shipment.
Shipping	Bule Ice

Experimental Data



Western blot analysis of 1)Hela, 2)Mouse Liver Tissue, 3)PC12, 4)Rat Liver Tissue with Nrf2 Rabbit pAb diluted at 1:2,000.



Immunohistochemical analysis of paraffin-embedded Human Lung Carcinoma using Nrf2 Rabbit pAb diluted at 1:200.

Background

Nuclear factor (erythroid-derived 2)-like 2, also known as NFE2L2 or Nrf2, is a transcription factor that in humans is encoded by the NFE2L2 gene. Small amounts of constitutive nuclear NRF2 maintain cellular homeostasis through regulation of basal expression of antioxidant response genes.