

Bcl-Xl Rabbit Polyclonal Antibody(F267)**Catalog No.: RA20201****Basic Information****Information**

Reactivity	H,M,R
Immunogen	Recombinant Protein
Host	Rabbit
Isotype	IgG
Storage Buffer & Condition	1mg/ml in PBS, pH 7.4, containing 0.02% sodium azide and 50% glycerol.
Observed MW	30KD

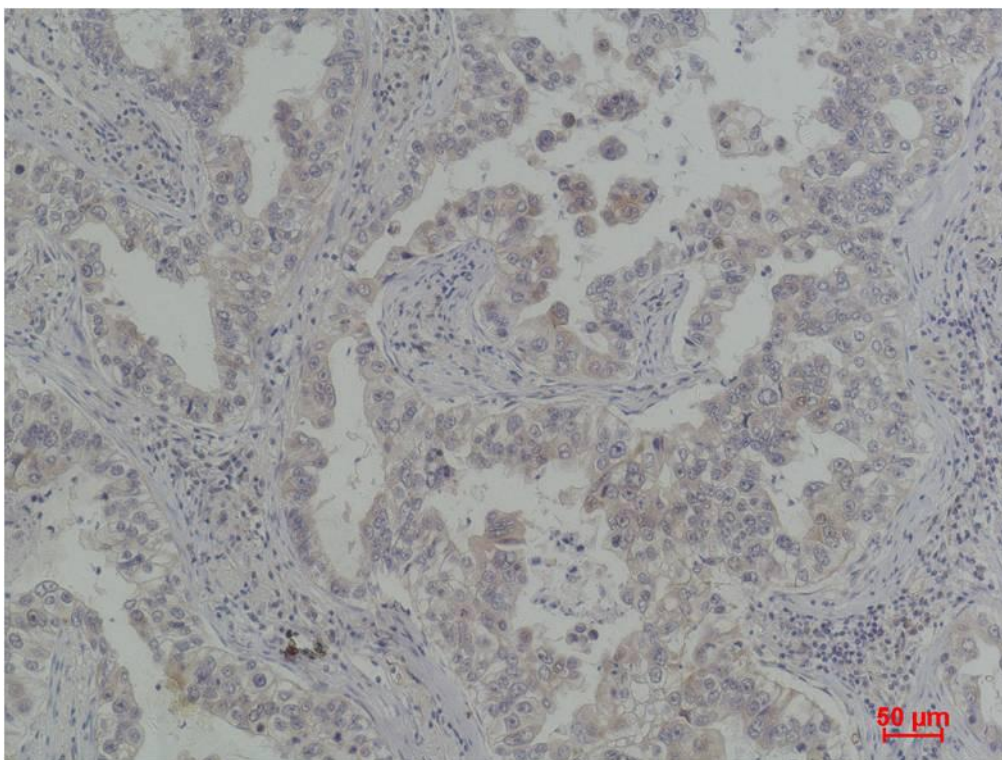
Applications**Recommended Dilution**

IHC	1:50-100
------------	----------

Preparation & Storage

Storage	Store at -20°C. Stable for one year from the date of shipment.
Shipping	Bule Ice

Experimental Data



Immunohistochemical analysis of paraffin-embedded Human Lung Carcinoma using Bcl-XL Rabbit pAb diluted at 1:200.

Background

Bcl-xL prevents apoptosis through two different mechanisms: heterodimerization with an apoptotic protein inhibits its apoptotic effect and formation of mitochondrial outer membrane pores help maintain a normal membrane state under stressful conditions.