

## S100 Rabbit Polyclonal Antibody(F229)

Catalog No.: RA20199

### Basic Information

#### Information

Reactivity	H,M,R
Immunogen	Recombinant Protein
Host	Rabbit
Isotype	IgG
Storage Buffer & Condition	1mg/ml in PBS, pH 7.4, containing 0.02% sodium azide and 50% glycerol.
Observed MW	15KD

#### Applications

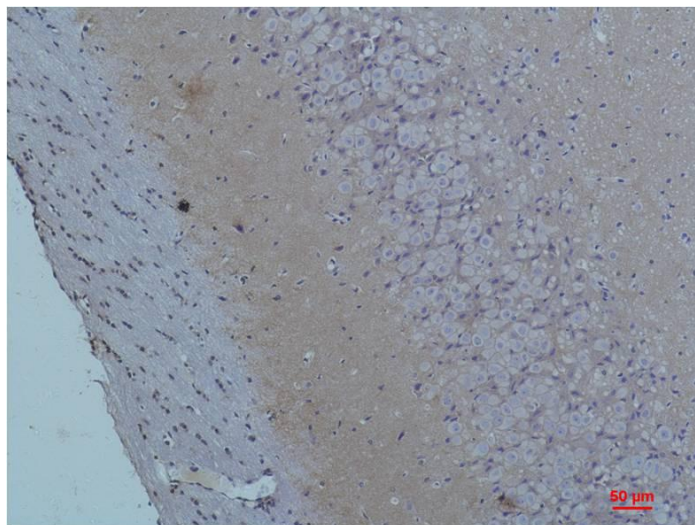
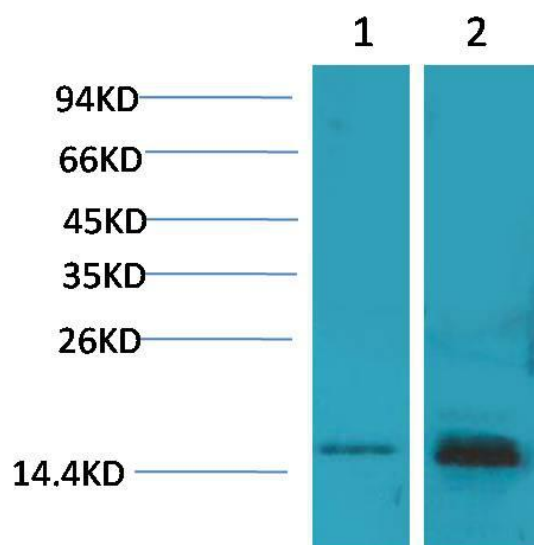
#### Recommended Dilution

WB	1:1,000-2,000
IHC	1:50-100

#### Preparation & Storage

Storage	Store at -20°C. Stable for one year from the date of shipment.
Shipping	Bule Ice

## Experimental Data



Western blot analysis of 1)293T, 2)Mouse Brain Tissue with S100 Rabbit pAb diluted at 1:2,000.

Immunohistochemical analysis of paraffin-embedded Rat Brain Tissue using S100 Rabbit pAb diluted at 1:200.

## Background

The S100 proteins are a family of low-molecular-weight proteins found in vertebrates and characterized by two calcium-binding sites that have helix-loop-helix ("EF-hand type") conformation.