

Smad2 Rabbit Polyclonal Antibody(F231)

Catalog No.: RA20187

Basic Information

Information

Reactivity	H,M,R
Immunogen	Recombinant Protein
Host	Rabbit
Isotype	IgG
Storage Buffer & Condition	1mg/ml in PBS, pH 7.4, containing 0.02% sodium azide and 50% glycerol.
Observed MW	60KD

Applications

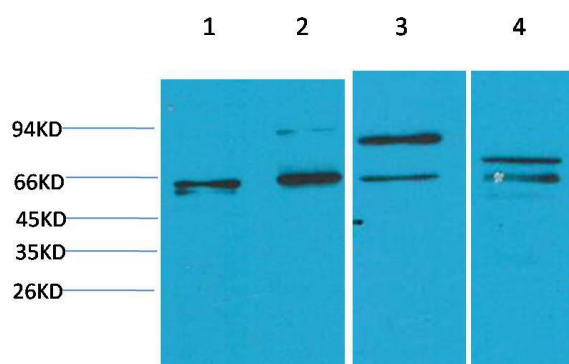
Recommended Dilution

WB	1:1,000-2,000
IHC	1:100-200

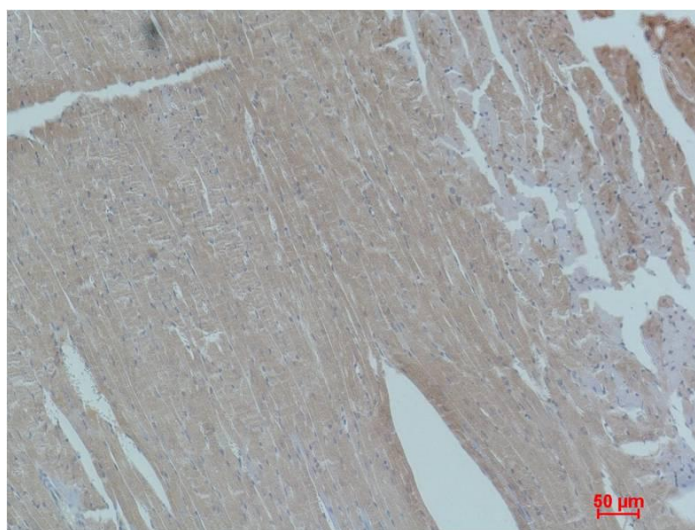
Preparation & Storage

Storage	Store at -20°C. Stable for one year from the date of shipment.
Shipping	Bule Ice

Experimental Data



Western blot analysis of 1)Hela, 2)Jurkat, 3)C2C12, 4)PC12 with Smad2 Rabbit pAb diluted at 1:2,000.



Immunohistochemical analysis of paraffin-embedded Mouse Heart Tissue using Smad2 Rabbit pAb diluted at 1:200.

Background

SMAD2 is a protein that in humans is encoded by the SMAD2 gene. SMAD proteins are signal transducers and transcriptional modulators that mediate multiple signaling pathways. SMAD2 mediates the signal of the transforming growth factor (TGF)- β , and thus regulates multiple cellular processes, such as cell proliferation, apoptosis, and differentiation. This protein is recruited to the TGF- β receptors through its interaction with the SMAD anchor for receptor activation (SARA) protein.