

HSPB8 HSP22 Rabbit Polyclonal Antibody(F167)

Catalog No.: RA20183

Basic Information

Information

Reactivity	H
Immunogen	Recombinant Protein
Host	Rabbit
Isotype	IgG
Storage Buffer & Condition	1mg/ml in PBS, pH 7.4, containing 0.02% sodium azide and 50% glycerol.
Observed MW	22KD

Applications

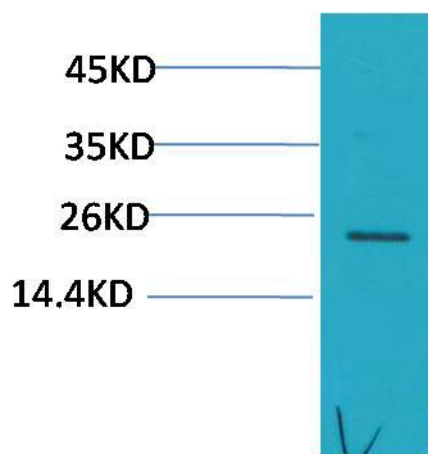
Recommended Dilution

WB	1:500-1,000
----	-------------

Preparation & Storage

Storage	Store at -20°C. Stable for one year from the date of shipment.
Shipping	Bule Ice

Experimental Data



Western blot analysis of Hela with HSPB8/HSP22 Rabbit pAb diluted at 1:1,000.

Background

Heat shock protein beta-8 is a protein that in humans is encoded by the HSPB8 gene. HSPB8 (HSP22) is a member of the small heat shock protein superfamily and the human protein is most closely related to HSP27.