

P21 Rabbit Polyclonal Antibody(F210)

Catalog No.: RA20182

Basic Information

Information

Reactivity	H,M,R
Immunogen	Recombinant Protein
Host	Rabbit
Isotype	IgG
Storage Buffer & Condition	1mg/ml in PBS, pH 7.4, containing 0.02% sodium azide and 50% glycerol.
Observed MW	21KD

Applications

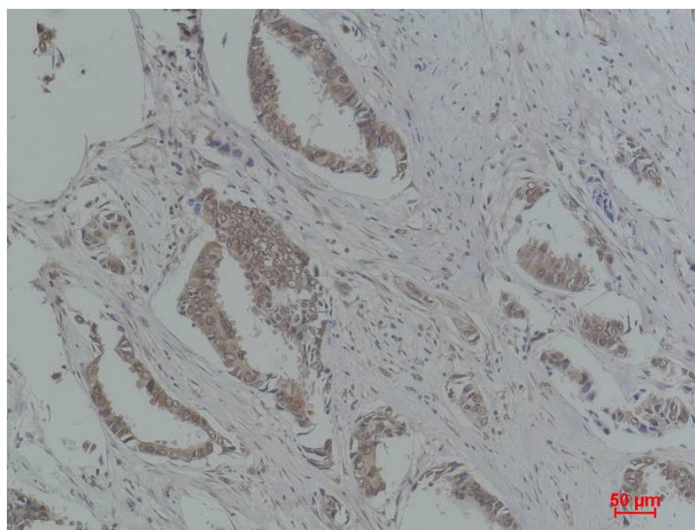
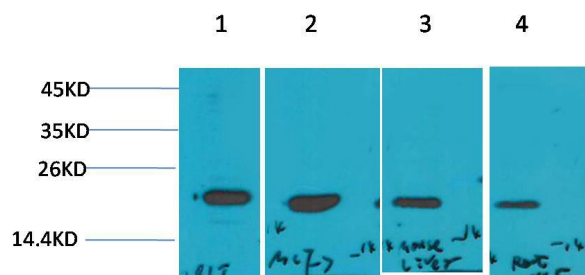
Recommended Dilution

WB	1:1,000-2,000
IHC	1:100-200

Preparation & Storage

Storage	Store at -20°C. Stable for one year from the date of shipment.
Shipping	Bule Ice

Experimental Data



Western blot analysis of 1)293T, 2)MCF7, 3)Mouse Liver Tissue, 4)Rat Liver Tissue with P21 Rabbit pAb diluted at 1:2,000.

Immunohistochemical analysis of paraffin-embedded Human Breast Carcinoma using P21 Rabbit pAb diluted at 1:200.

Background

p21 / WAF1 / CIP1 also known as cyclin-dependent kinase inhibitor 1 or CDK-interacting protein 1 is a protein that in humans is encoded by the CDKN1A gene. p21 is a potent cyclin-dependent kinase inhibitor (CKI). The p21 (CIP1/WAF1) protein binds to and inhibits the activity of cyclin-CDK2,-CDK1,and -CDK4/6 complexes,and thus functions as a regulator of cell cycle progression at G1 and S phase.