

Akt2 Rabbit Polyclonal Antibody(F204)

Catalog No.: RA20181

Basic Information

Information

Reactivity	H,M,R
Immunogen	Recombinant Protein
Host	Rabbit
Isotype	IgG
Storage Buffer & Condition	1mg/ml in PBS, pH 7.4, containing 0.02% sodium azide and 50% glycerol.
Observed MW	60KD

Applications

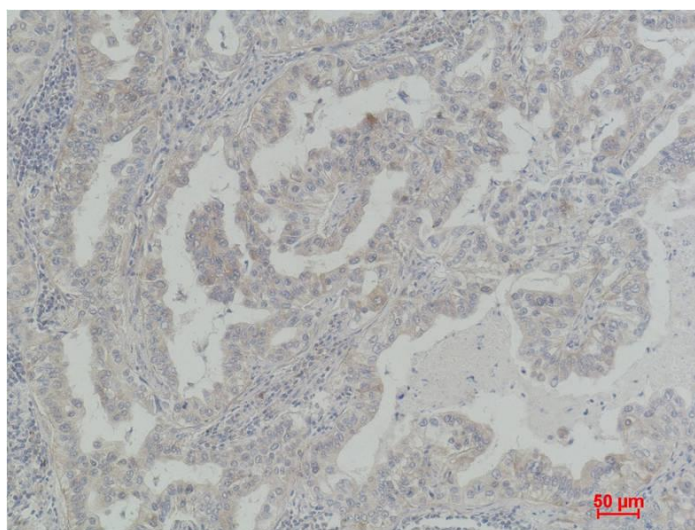
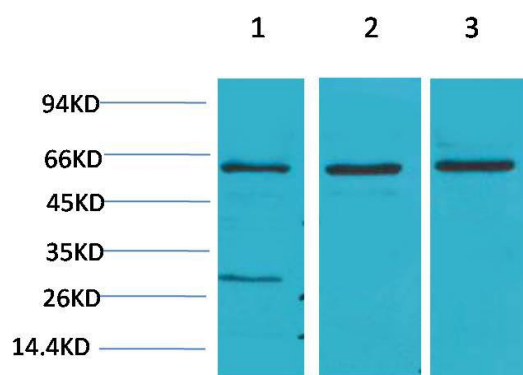
Recommended Dilution

WB	1:500-1,000
IHC	1:100-200

Preparation & Storage

Storage	Store at -20°C. Stable for one year from the date of shipment.
Shipping	Bule Ice

Experimental Data



Western blot analysis of 1)HeLa, 2)3T3, 3)PC12 with Akt2 Rabbit pAb diluted at 1:2,000.

Immunohistochemical analysis of paraffin-embedded Human Lung Carcinoma using Akt2 Rabbit pAb diluted at 1:200.

Background

RAC-beta serine/threonine-protein kinase is an enzyme that in humans is encoded by the AKT2 gene. This gene is a putative oncogene encoding a protein belonging to the AKT subfamily of serine/threonine kinases that contain SH2-like (Src homology 2-like) domains. The encoded protein is a general protein kinase capable of phosphorylating several known proteins.