

α -actinin Rabbit Polyclonal Antibody(F298)**Catalog No.: RA20176****Basic Information****Information**

Reactivity	M,R
Immunogen	Recombinant Protein
Host	Rabbit
Isotype	IgG
Storage Buffer & Condition	1mg/ml in PBS, pH 7.4, containing 0.02% sodium azide and 50% glycerol.
Observed MW	103KD

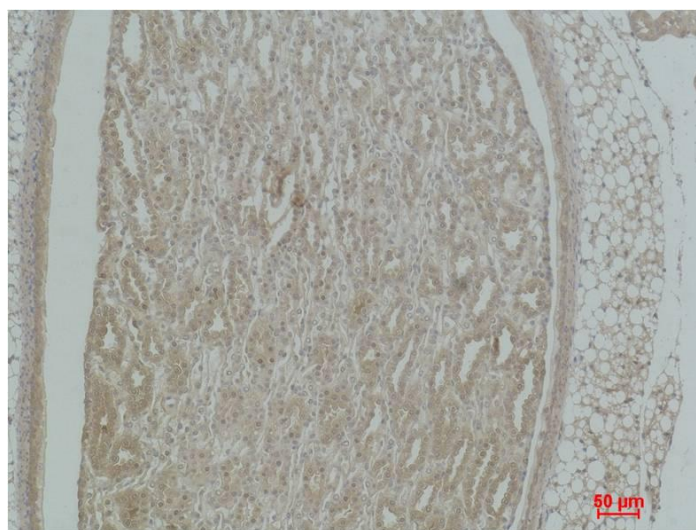
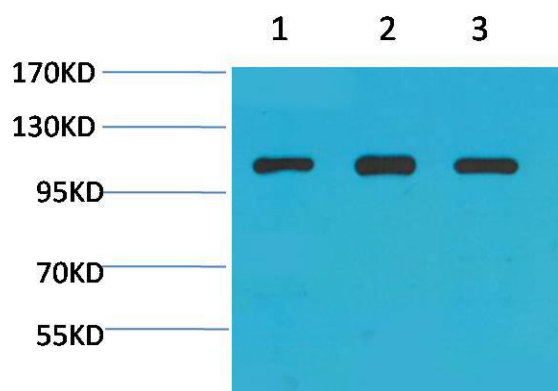
Applications**Recommended Dilution**

WB	1:1,000-2,000
IHC	1:200-500

Preparation & Storage

Storage	Store at -20°C. Stable for one year from the date of shipment.
Shipping	Bule Ice

Experimental Data



Western blot analysis of 1)3T3, 2)PC12, 3)Rat Heart Tissue with α -actinin Rabbit pAb diluted at 1:2,000.

Immunohistochemical analysis of paraffin-embedded Mouse Kidney Tissue using α -actinin Rabbit pAb diluted at 1:500.

Background

α -Actinin belongs to the spectrin family of cytoskeletal proteins. α -Actinin is necessary for the attachment of actin filaments to the Z-lines in skeletal muscle cells, and to the dense bodies in smooth muscle cells. The functional protein is an anti-parallel dimer, which cross-links the thin filaments in adjacent sarcomeres, and therefore coordinated contractions between sarcomeres in the horizontal axis.