

# STAT1 Rabbit Polyclonal Antibody(F241)

Catalog No.: RA20172

## Basic Information

### Information

|                            |  |
|----------------------------|--|
| Reactivity                 | H,M,R  |
| Immunogen                  | Recombinant Protein  |
| Host                       | Rabbit   |
| Isotype                    | IgG  |
| Storage Buffer & Condition | 1mg/ml in PBS, pH 7.4, containing 0.02% sodium azide and 50% glycerol. |
| Observed MW                | 84,91KD  |

### Applications

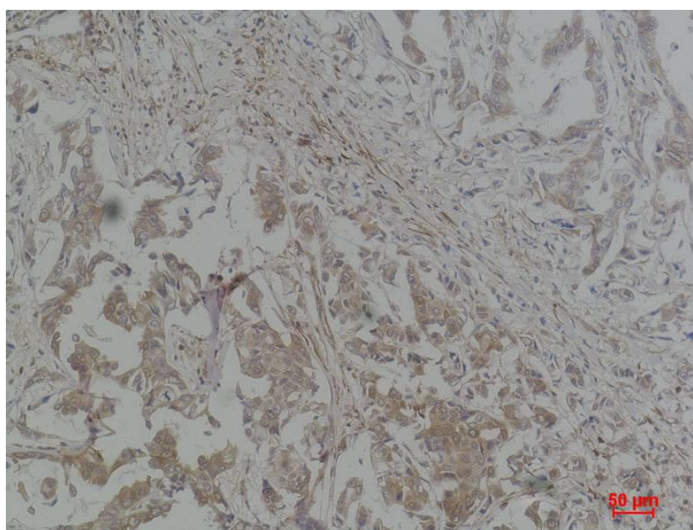
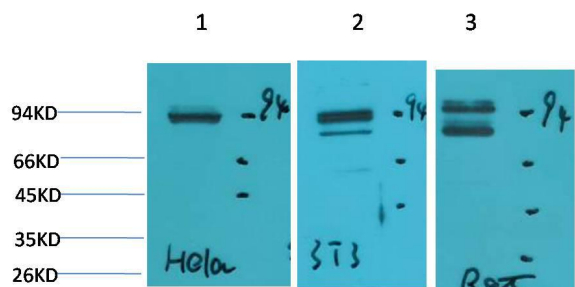
### Recommended Dilution

|     |               |
|-----|---------------|
| WB  | 1:1,000-2,000 |
| IHC | 1:200-500     |

## Preparation & Storage

|          |  |
|----------|--|
| Storage  | Store at -20°C. Stable for one year from the date of shipment. |
| Shipping | Bule Ice   |

## Experimental Data



Western blot analysis of 1)HeLa, 2)3T3, 3)Rat Heart Tissue with STAT1 Rabbit pAb diluted at 1:2,000.

Immunohistochemical analysis of paraffin-embedded Human Breast Carcinoma using STAT1 Rabbit pAb diluted at 1:500.

## Background

STAT1 is a member of the Signal Transducers and Activators of Transcription family of transcription factors. STAT1 is involved in upregulating genes due to a signal by either type I, type II, or type III interferons.