

Caspase 8 Rabbit Polyclonal Antibody(MTDY2)

Catalog No.: RA20171

Basic Information

Information

Reactivity	H,M,R
Immunogen	Recombinant Protein
Host	Rabbit
Isotype	IgG
Storage Buffer & Condition	1mg/ml in PBS, pH 7.4, containing 0.02% sodium azide and 50% glycerol.
Observed MW	43,57KD

Applications

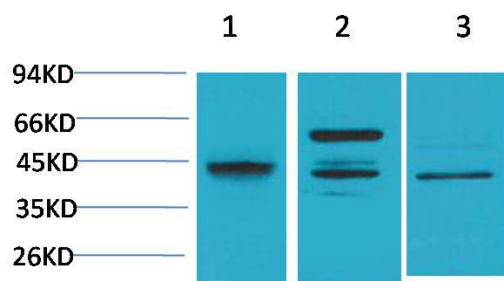
Recommended Dilution

WB	1:1,000-2,000
IHC	1:50-100

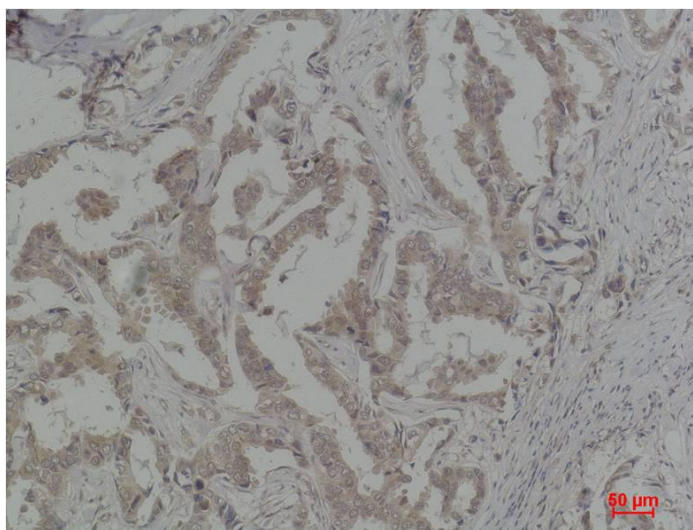
Preparation & Storage

Storage	Store at -20°C. Stable for one year from the date of shipment.
Shipping	Bule Ice

Experimental Data



Western blot analysis of 1)HeLa, 2)Raw 264.7, 3)PC12 with Caspase 8 Rabbit pAb diluted at 1:2,000.



Immunohistochemical analysis of paraffin-embedded Human Breast Carcinoma using Caspase 8 Rabbit pAb diluted at 1:100.

Background

Caspase-8 is a caspase protein, encoded by the CASP8 gene. It most likely acts upon caspase-3. Activated caspase-8 cleaves and activates downstream effector caspases such as caspase-1, -3, -6, and -7.