

# Calnexin Rabbit Polyclonal Antibody(F272)

Catalog No.: RA20160

## Basic Information

### Information

Reactivity	H,M,R
Immunogen	Recombinant Protein
Host	Rabbit
Isotype	IgG
Storage Buffer & Condition	1mg/ml in PBS, pH 7.4, containing 0.02% sodium azide and 50% glycerol.
Observed MW	75,80,90KD

### Applications

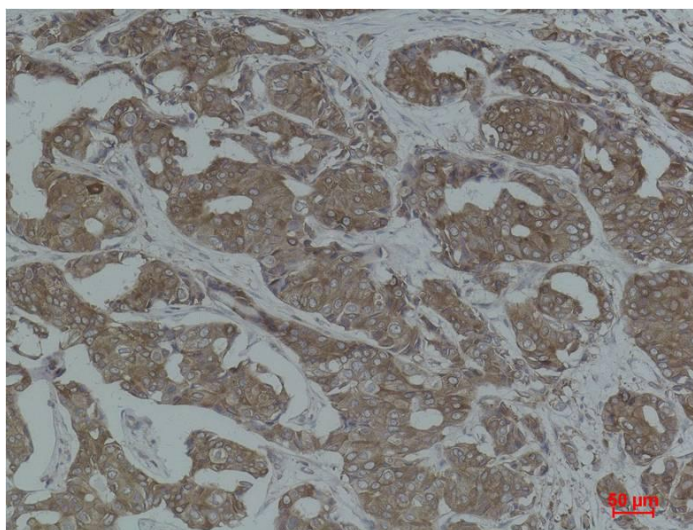
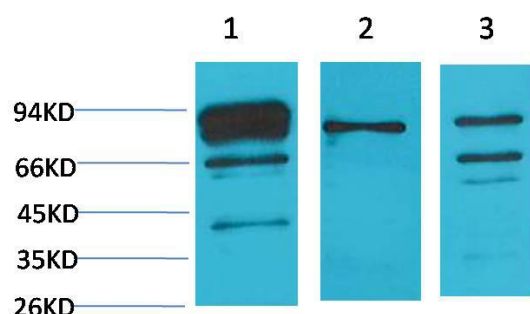
### Recommended Dilution

WB	1:1,000-2,000
IHC	1:200-500

## Preparation & Storage

Storage	Store at -20°C. Stable for one year from the date of shipment.
Shipping	Bule Ice

## Experimental Data



Western blot analysis of 1)HeLa, 2)3T3, 3)PC12 with Calnexin Rabbit pAb diluted at 1:2,000.

Immunohistochemical analysis of paraffin-embedded Human Breast Carcinoma using Calnexin Rabbit pAb diluted at 1:500.

## Background

Calnexin is a chaperone, characterized by assisting protein folding and quality control, ensuring that only properly folded and assembled proteins proceed further along the secretory pathway. Calnexin is an integral protein (that appears variously as a 90kDa, 80kDa or 75kDa band on western blotting depending on the source of the antibody) of the endoplasmic reticulum (ER). It consists of a large (50 kDa) N-terminal calcium-binding luminal domain, a single transmembrane helix and a short (90 residues), acidic cytoplasmic tail.