

I κ B α Rabbit Polyclonal Antibody(F169)

Catalog No.: RA20159

Basic Information

Information

Reactivity	H,R
Immunogen	Recombinant Protein
Host	Rabbit
Isotype	IgG
Storage Buffer & Condition	1mg/ml in PBS, pH 7.4, containing 0.02% sodium azide and 50% glycerol.
Observed MW	40KD

Applications

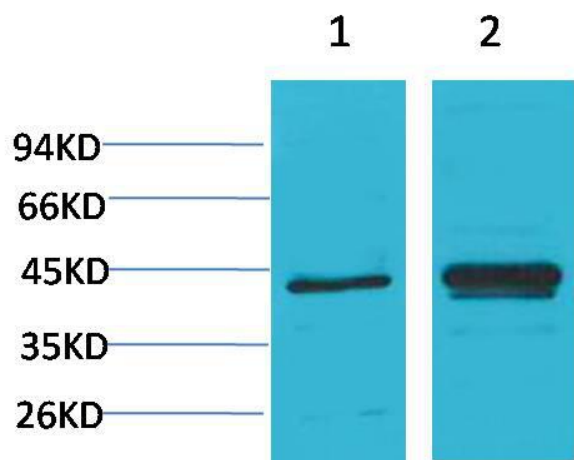
Recommended Dilution

WB	1:2,000-5,000
IHC	1:200-500

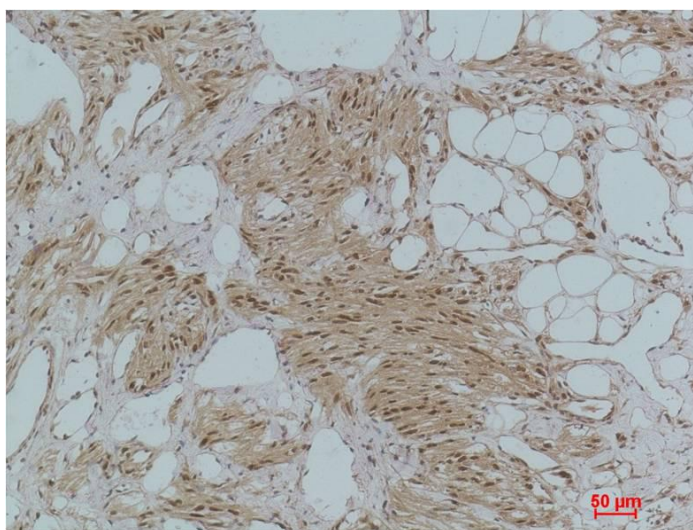
Preparation & Storage

Storage	Store at -20°C. Stable for one year from the date of shipment.
Shipping	Bule Ice

Experimental Data



Western blot analysis of 1)HeLa, 2)PC12 with IkB α Rabbit pAb diluted at 1:2,000.



Immunohistochemical analysis of paraffin-embedded Human Kidney Tissue using IkB α Rabbit pAb diluted at 1:500.

Background

Inhibits the activity of dimeric NF-kappa-B/REL complexes by trapping REL dimers in the cytoplasm through masking of their nuclear localization signals. IkB α phosphorylation and resulting Rel-dependent transcription are activated by a highly diverse group of extracellular signals including inflammatory cytokines, growth factors, and chemokines.