

# STAT2 Rabbit Polyclonal Antibody(F243)

Catalog No.: RA20158

## Basic Information

### Information

Reactivity	H,M,R
Immunogen	Recombinant Protein
Host	Rabbit
Isotype	IgG
Storage Buffer & Condition	1mg/ml in PBS, pH 7.4, containing 0.02% sodium azide and 50% glycerol.
Observed MW	113KD

### Applications

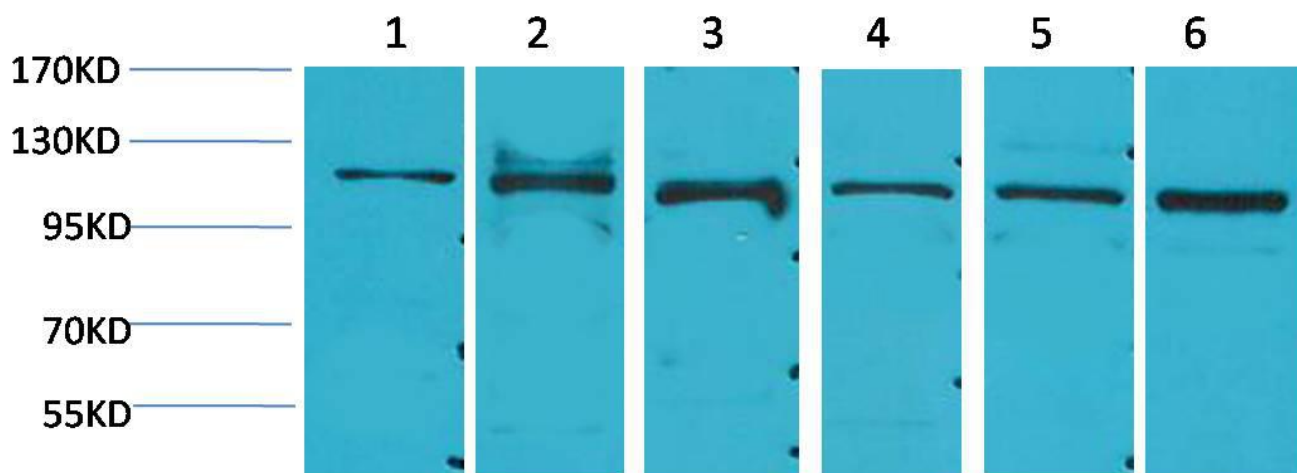
### Recommended Dilution

WB	1:500-1,000
----	-------------

## Preparation & Storage

Storage	Store at -20°C. Stable for one year from the date of shipment.
Shipping	Bule Ice

## Experimental Data



Western blot analysis of 1)Hela, 2)K562, 3)3T3, 4)Mouse Heart Tissue, 5)Rat Heart Tissue, 6)Rat Kidney Tissue with STAT2 Rabbit pAb diluted at 1:2,000.

## Background

Signal transducer and activator of transcription 2 is a protein that in humans is encoded by the STAT2 gene. Stat2 is rapidly activated by phosphorylation at Tyr690 in response to stimulation by IFN- $\alpha$ /beta via associations with receptor-bound Jak kinases.