

# PI3 Kinase P85 $\beta$ Rabbit Polyclonal Antibody(F221)

Catalog No.: RA20156

## Basic Information

### Information

Reactivity	H
Immunogen	Recombinant Protein
Host	Rabbit
Isotype	IgG
Storage Buffer & Condition	1mg/ml in PBS, pH 7.4, containing 0.02% sodium azide and 50% glycerol.
Observed MW	82KD

### Applications

### Recommended Dilution

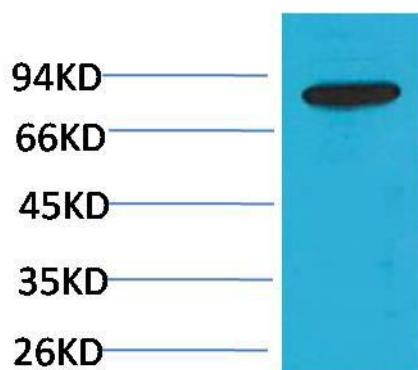
WB 1:1,000-2,000

IHC 1:50-200

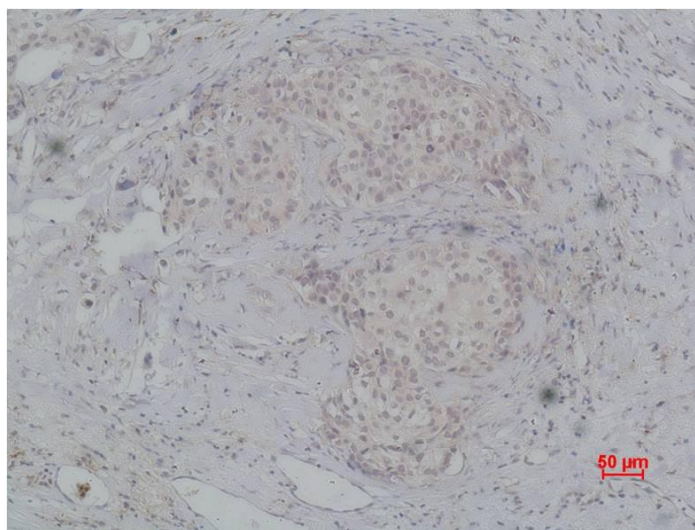
## Preparation & Storage

Storage	Store at -20°C. Stable for one year from the date of shipment.
Shipping	Bule Ice

## Experimental Data



Western blot analysis of HepG2 with PI3 Kinase P85 $\beta$  Rabbit pAb diluted at 1:2,000.



Immunohistochemical analysis of paraffin-embedded Human breast carcinoma using PI3 Kinase P85 $\beta$  Rabbit pAb diluted at 1:200.

## Background

PI3 Kinase P85 $\beta$  mediating the association of the p110 catalytic unit to the plasma membrane.