

# STAT2 Rabbit Polyclonal Antibody(F242)

Catalog No.: RA20153

## Basic Information

### Information

Reactivity	H,M,R
Immunogen	Recombinant Protein
Host	Rabbit
Isotype	IgG
Storage Buffer & Condition	1mg/ml in PBS, pH 7.4, containing 0.02% sodium azide and 50% glycerol.
Observed MW	98KD

### Applications

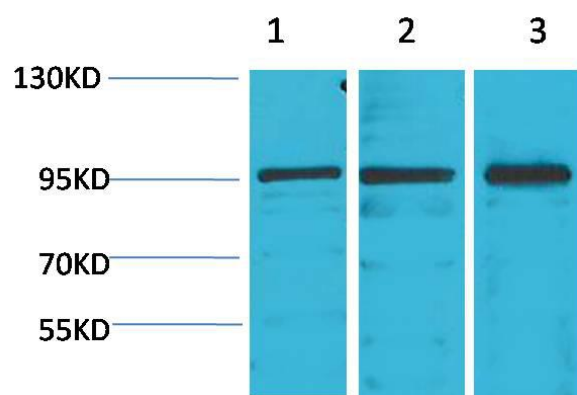
### Recommended Dilution

WB	1:1,000-2,000
IHC	1:200-500

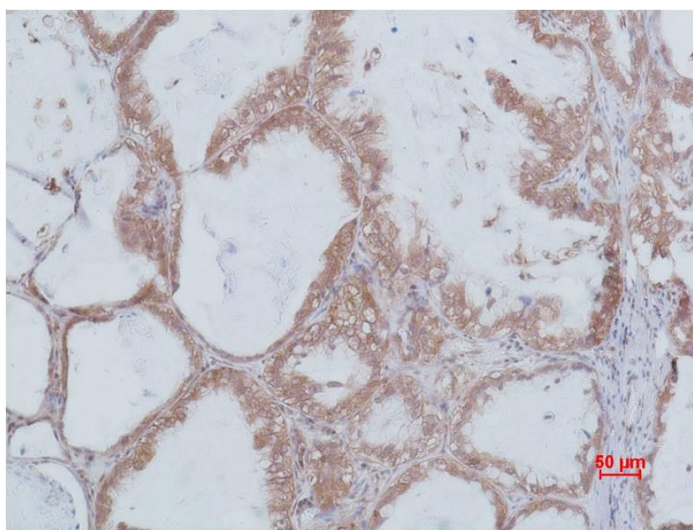
## Preparation & Storage

Storage	Store at -20°C. Stable for one year from the date of shipment.
Shipping	Bule Ice

## Experimental Data



Western blot analysis of 1)K562, 2)Mouse Heart Tissue, 3)Rat Heart Tissue, with STAT2 Rabbit pAb diluted at 1:2,000.



Immunohistochemical analysis of paraffin-embedded Human Lung carcinoma using STAT2 Rabbit pAb diluted at 1:500.

## Background

Signal transducer and activator of transcription that mediates signaling by type I IFNs (IFN-alpha and IFN-beta). Following type I IFN binding to cell surface receptors, Jak kinases (TYK2 and JAK1) are activated, leading to tyrosine phosphorylation of STAT1 and STAT2.