

SOD1 Rabbit Polyclonal Antibody(F237)

Catalog No.: RA20146

Basic Information

Information

Reactivity	H,M,R
Immunogen	Recombinant Protein
Host	Rabbit
Isotype	IgG
Storage Buffer & Condition	1mg/ml in PBS, pH 7.4, containing 0.02% sodium azide and 50% glycerol.
Observed MW	18KD

Applications

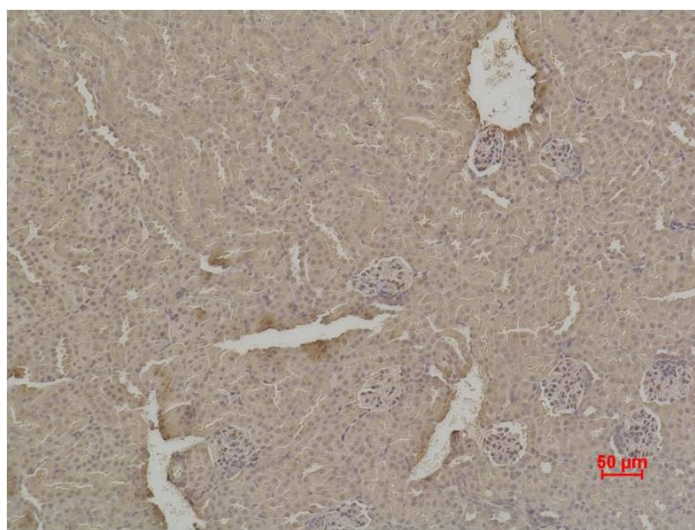
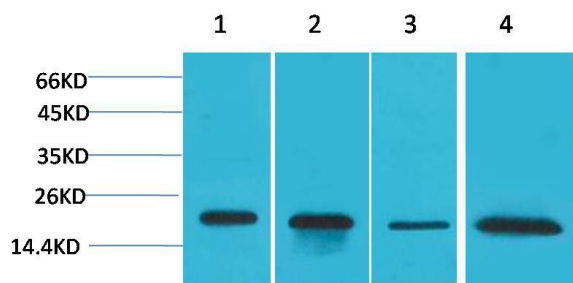
Recommended Dilution

WB	1:2,000-5,000
IHC	1:200-500

Preparation & Storage

Storage	Store at -20°C. Stable for one year from the date of shipment.
Shipping	Bule Ice

Experimental Data



Western blot analysis of 1)HeLa, 2)MCF7, 3)Mouse Brain Tissue, 4)Rat Brain Tissue, with SOD1 Rabbit pAb diluted at 1:2,000.

Immunohistochemical analysis of paraffin-embedded Mouse Kidney Tissue using SOD1 Rabbit pAb diluted at 1:500.

Background

Superoxide dismutase [Cu-Zn] also known as superoxide dismutase 1 or SOD1 is an enzyme that in humans is encoded by the SOD1 gene, located on chromosome 21. SOD1 is one of three human superoxide dismutases.