

# eEF1A2 Binding Protein Rabbit Polyclonal Antibody(1)

## Catalog No.: RA20143

### Basic Information

#### Information

Reactivity	H,M,R,Pg
Immunogen	Recombinant Protein
Host	Rabbit
Isotype	IgG
Storage Buffer & Condition	1mg/ml in PBS, pH 7.4, containing 0.02% sodium azide and 50% glycerol.
Observed MW	115KD

#### Applications

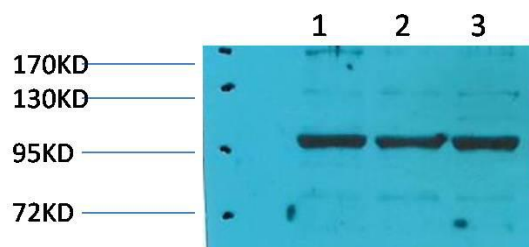
#### Recommended Dilution

WB	1:2,000-5,000
IHC	1:200-500

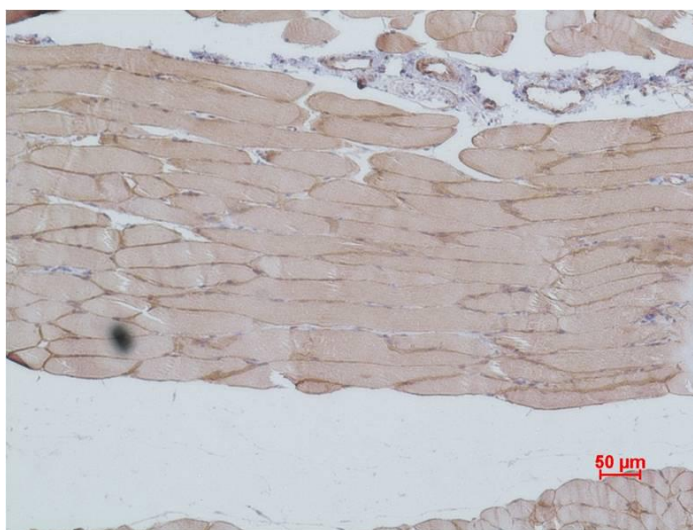
#### Preparation & Storage

Storage	Store at -20°C. Stable for one year from the date of shipment.
Shipping	Bule Ice

## Experimental Data



Western blot analysis of 1)Pig Skeletal MuscleTissue, 2)Rat Skeletal Muscle Tissue, 3)Rat Skeletal MusleTissue with eEF1A2 Rabbit pAb diluted at 1:5,000.



Immunohistochemical analysis of paraffin-embedded Mouse Skeletal MuscleTissue using eEF1A2 Rabbit pAb diluted at 1:500.

## Background

Elongation factor 1-alpha 2 is a protein that in humans is encoded by the EEF1A2 gene. This gene encodes an isoform of the alpha subunit of the elongation factor-1 complex, which is responsible for the enzymatic delivery of aminoacyl tRNAs to the ribosome.