

# Calcium Sensing Receptor Rabbit Polyclonal Antibody(A192) Catalog No.: RA20139

## Basic Information

### Information

Reactivity	M,R
Immunogen	Synthetic Peptide
Host	Rabbit
Isotype	IgG
Storage Buffer & Condition	1mg/ml in PBS, pH 7.4, containing 0.02% sodium azide and 50% glycerol.
Observed MW	130KD

### Applications

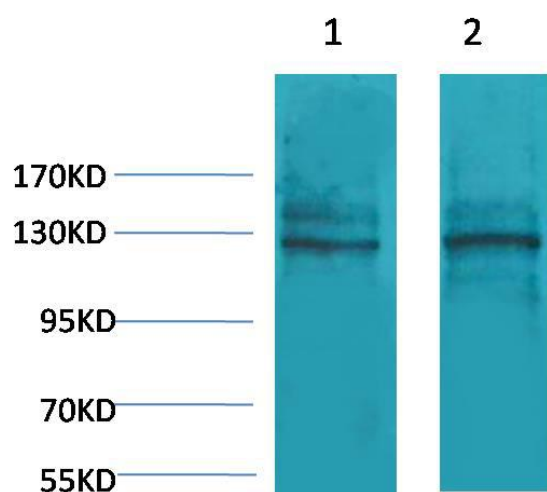
### Recommended Dilution

WB	1:500-1,000
IHC	1:200-500

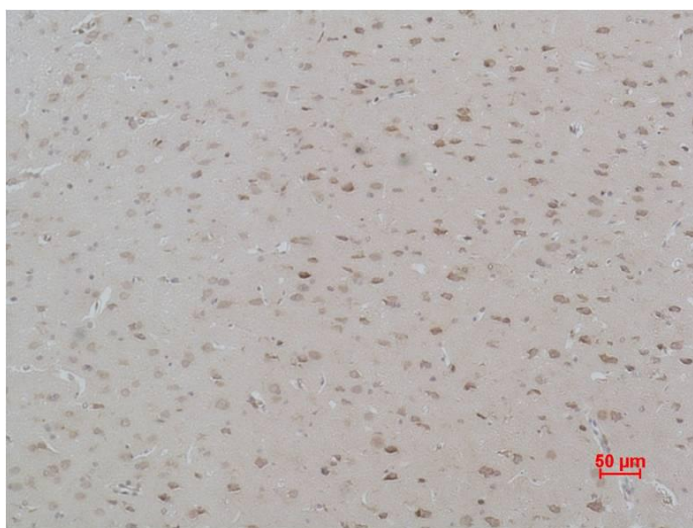
## Preparation & Storage

Storage	Store at -20°C. Stable for one year from the date of shipment.
Shipping	Bule Ice

## Experimental Data



Western blot analysis of 1)Mouse Brain Tissue, 2)Rat Brain Tissue with Calcium Sensing Receptor Rabbit pAb diluted at 1:2,000.



Immunohistochemical analysis of paraffin-embedded Rat Brain Tissue using Calcium Sensing Receptor Rabbit pAb diluted at 1:500.

## Background

The calcium-sensing receptor (CaSR) is a Class C G-protein coupled receptor which senses extracellular levels of calcium ion. In the parathyroid gland, the calcium-sensing receptor controls calcium homeostasis by regulating the release of parathyroid hormone.