

**NMBR (Bombesin Receptor 1) Rabbit Polyclonal  
Antibody(A186)  
Catalog No.: RA20136**

## Basic Information

### Information

<b>Reactivity</b>	H,M,R
<b>Immunogen</b>	Synthetic Peptide
<b>Host</b>	Rabbit
<b>Isotype</b>	IgG
<b>Storage Buffer &amp; Condition</b>	1mg/ml in PBS, pH 7.4, containing 0.02% sodium azide and 50% glycerol.
<b>Observed MW</b>	50KD

### Applications

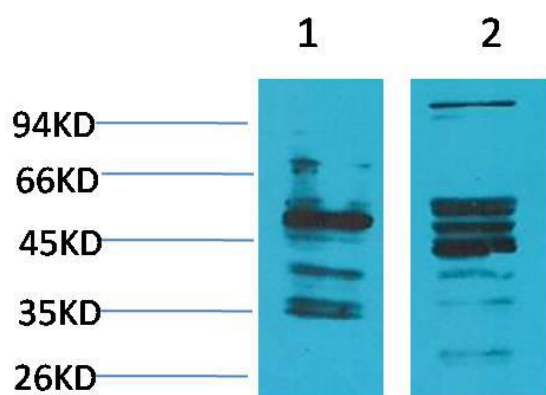
### Recommended Dilution

<b>WB</b>	1:1,000-2,000
<b>IHC</b>	1:200-500

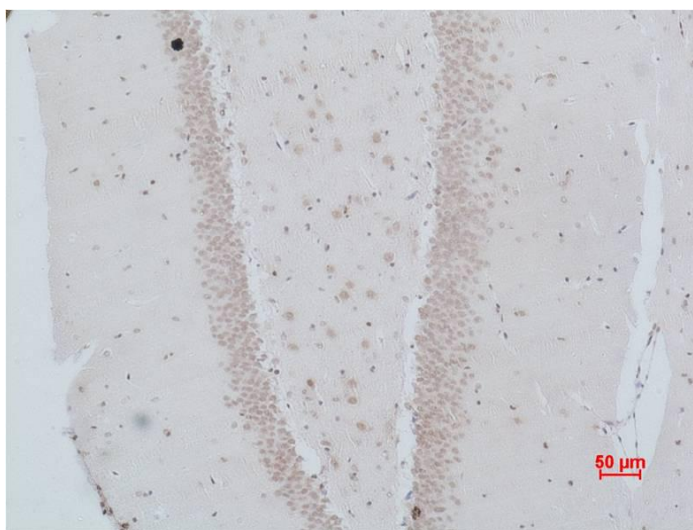
## Preparation & Storage

<b>Storage</b>	Store at -20°C. Stable for one year from the date of shipment.
<b>Shipping</b>	Bule Ice

## Experimental Data



Western blot analysis of 1) Human Brain Tissue, 2) Rat Brain Tissue with NMBR (Bombesin Receptor 1) Rabbit pAb diluted at 1:2,000.



Immunohistochemical analysis of paraffin-embedded Rat Brain Tissue using NMBR (Bombesin Receptor 1) Rabbit pAb diluted at 1:500.

## Background

Receptor for neuromedin-B. Belongs to the G-protein coupled receptor 1 family.