

# Bestrophin-2 Rabbit Polyclonal Antibody(A185)

Catalog No.: RA20134

## Basic Information

### Information

Reactivity	M,R
Immunogen	Synthetic Peptide
Host	Rabbit
Isotype	IgG
Storage Buffer & Condition	1mg/ml in PBS, pH 7.4, containing 0.02% sodium azide and 50% glycerol.
Observed MW	50KD

### Applications

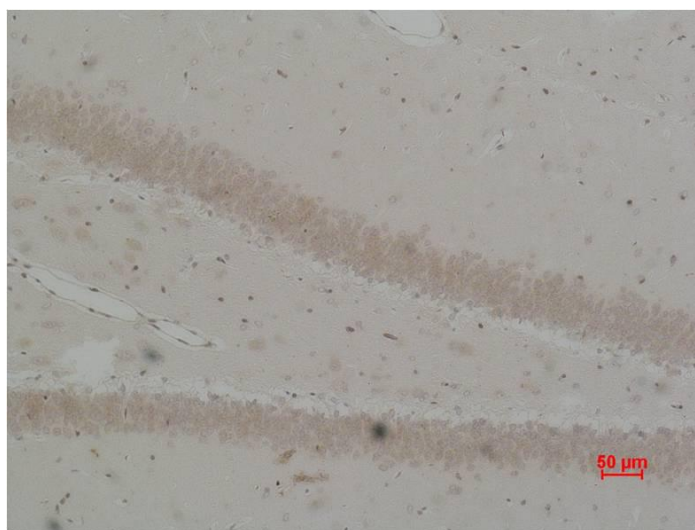
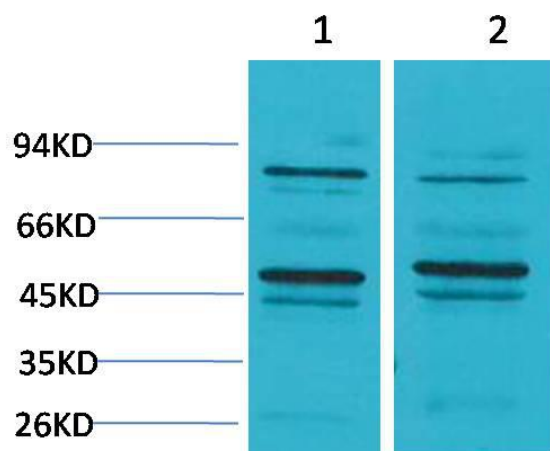
### Recommended Dilution

WB	1:500-1,000
IHC	1:200-500

## Preparation & Storage

Storage	Store at -20°C. Stable for one year from the date of shipment.
Shipping	Bule Ice

## Experimental Data



Western blot analysis of 1) Mouse Brain Tissue, 2) Rat Brain Tissue with Bestrophin-2 Rabbit pAb diluted at 1:2,000.

Immunohistochemical analysis of paraffin-embedded Rat Brain Tissue using Bestrophin-2 Rabbit pAb diluted at 1:500.

## Background

The Bestrophins are a newly described family of anion channels unrelated in primary sequence to any previously characterized channel proteins. Two different topologies for Bestrophin-1 have been proposed.