

**Angiotensin(1-7) Mas Receptor Rabbit Polyclonal  
Antibody(A179)  
Catalog No.: RA20133**

## Basic Information

### Information

<b>Reactivity</b>	H,M,R
<b>Immunogen</b>	Synthetic Peptide
<b>Host</b>	Rabbit
<b>Isotype</b>	IgG
<b>Storage Buffer &amp; Condition</b>	1mg/ml in PBS, pH 7.4, containing 0.02% sodium azide and 50% glycerol.
<b>Observed MW</b>	36-50KD

### Applications

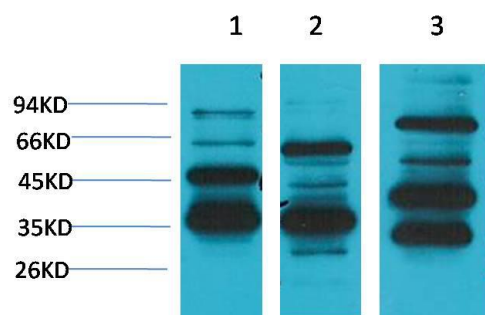
### Recommended Dilution

<b>WB</b>	1:2,000-5,000
<b>IHC</b>	1:200-500

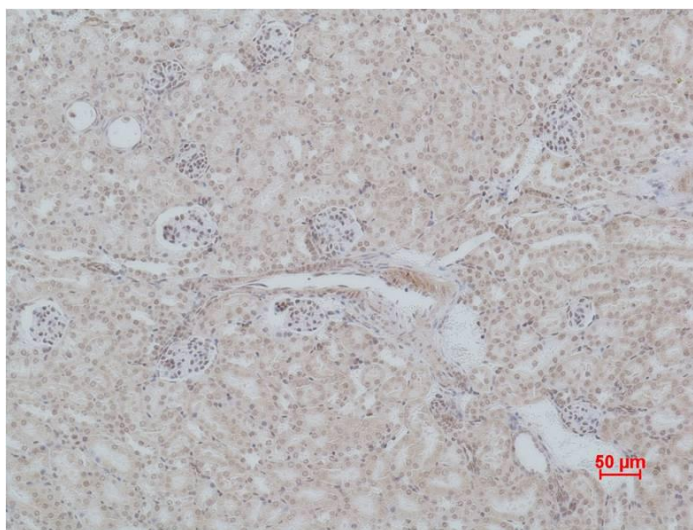
## Preparation & Storage

<b>Storage</b>	Store at -20°C. Stable for one year from the date of shipment.
<b>Shipping</b>	Bule Ice

## Experimental Data



Western blot analysis of 1)Human Brain Tissue, 2)Mouse Brain Tissue, 3)Rat Brain Tissue with Angiotensin (1-7) Rabbit pAb diluted at 1:2,000.



Immunohistochemical analysis of paraffin-embedded Mouse Kidney Tissue using Angiotensin(1-7) Mas Receptor Rabbit pAb diluted at 1:500.

## Background

The angiotensin-(1-7) Mas receptor is the recently identified receptor of the biologically active heptapeptide angiotensin-(1-7).Angiotensin (Ang)-(1-7) is a metabolite of the well known peptide hormone Angiotensin (Ang) II,a key component of the renin-angiotensin system (RAS) that has a central role in cardiovascular homeostasis.