

**AMPA Receptor(GluR4) Rabbit Polyclonal
Antibody(A177)
Catalog No.: RA20132**

Basic Information

Information

Reactivity	H,R
Immunogen	Synthetic Peptide
Host	Rabbit
Isotype	IgG
Storage Buffer & Condition	1mg/ml in PBS, pH 7.4, containing 0.02% sodium azide and 50% glycerol.
Observed MW	101KD

Applications

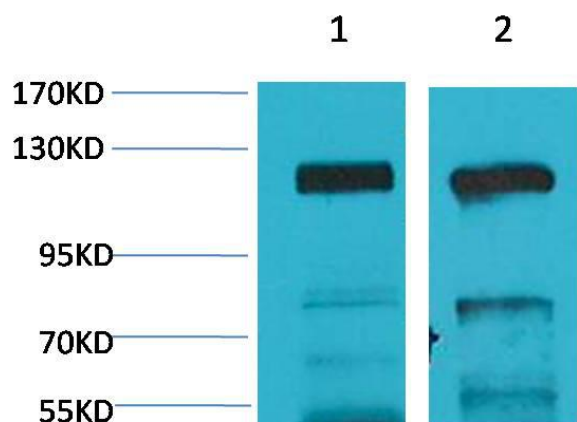
Recommended Dilution

WB	1:500-1,000
IHC	1:200-500

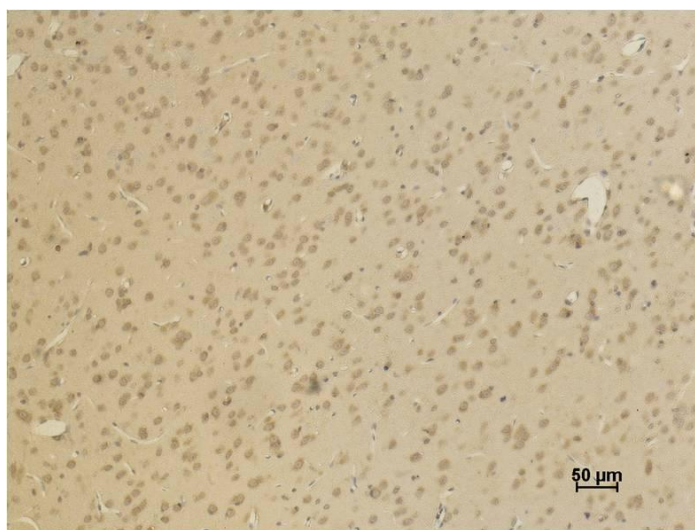
Preparation & Storage

Storage	Store at -20°C. Stable for one year from the date of shipment.
Shipping	Bule Ice

Experimental Data



Western blot analysis of 1) Human Brain Tissue, 2) Rat Brain Tissue with AMPA Receptor 4 (GluA4) Rabbit pAb diluted at 1:2,000.



Immunohistochemical analysis of paraffin-embedded Rat Brain Tissue using AMPA Receptor (GluR4) Rabbit pAb diluted at 1:500.

Background

Glutamate is the major excitatory neurotransmitter and modulates its effects via ionotropic and metabotropic receptors which are different in their molecular, biochemical, pharmacological and physiological properties. The receptor then desensitizes rapidly and enters a transient inactive state, characterized by the presence of bound agonist.