

Beclin-1 Rabbit Polyclonal Antibody(F121)

Catalog No.: RA20119

Basic Information

Information

Reactivity	H,M,R
Immunogen	Recombinant Protein
Host	Rabbit
Isotype	IgG
Storage Buffer & Condition	1mg/ml in PBS, pH 7.4, containing 0.02% sodium azide and 50% glycerol.
Observed MW	60KD

Applications

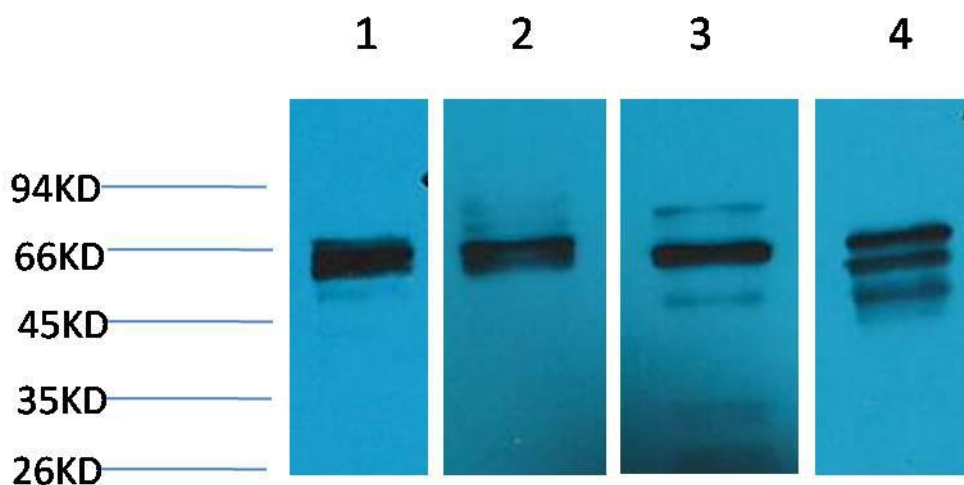
Recommended Dilution

WB	1:1,000-2,000
----	---------------

Preparation & Storage

Storage	Store at -20°C. Stable for one year from the date of shipment.
Shipping	Bule Ice

Experimental Data



Western blot analysis of 1)Jurkat, 2)293T, 3)C2C12, 4)Rat Kidney, with Beclin-1 Rabbit pAb diluted at 1:2,000.

Background

Autophagy is a catabolic process for the autophagosomic-lysosomal degradation of proteins activated in response to nutrient deprivation and in neurodegenerative conditions. One of the proteins critical to this process is Beclin-1.