

## HSP90 $\alpha$ Rabbit Polyclonal Antibody(F164)

Catalog No.: RA20110

### Basic Information

#### Information

Reactivity	H,M,R
Immunogen	Recombinant Protein
Host	Rabbit
Isotype	IgG
Storage Buffer & Condition	1mg/ml in PBS, pH 7.4, containing 0.02% sodium azide and 50% glycerol.
Observed MW	95KD

#### Applications

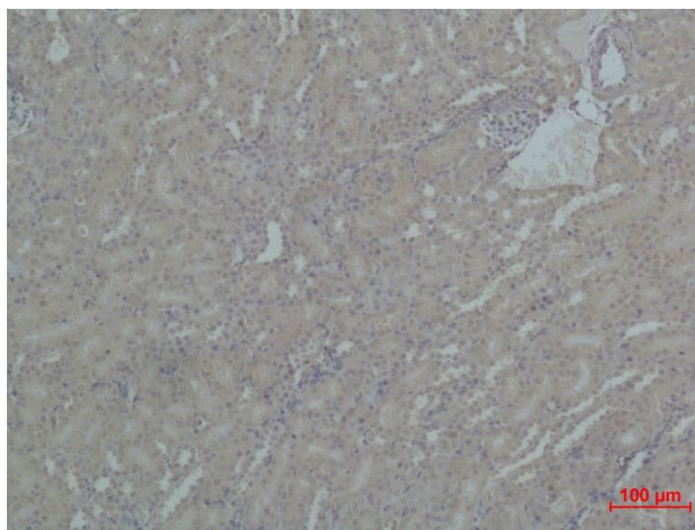
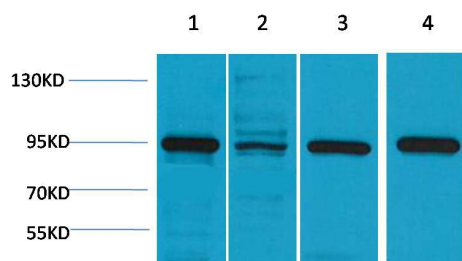
#### Recommended Dilution

WB	1:1,000-2,000
IHC	1:200-500

#### Preparation & Storage

Storage	Store at -20°C. Stable for one year from the date of shipment.
Shipping	Bule Ice

## Experimental Data



Western blot analysis of 1)Hela, 2)3T3, 3)Mouse Brain, 4)Rat Brain, with HSP90  $\alpha$  Rabbit pAb diluted at 1:2,000.

Immunohistochemical analysis of paraffin-embedded Mouse Kidney Tissue using HSP90 $\alpha$  Rabbit pAb diluted at 1:500.

## Background

Hsp90 (heat shock protein 90) is a chaperone protein that assists other proteins to fold properly, stabilizes proteins against heat stress, and aids in protein degradation. In mammalian cells, there are two or more genes encoding cytosolic Hsp90 homologues, with the human Hsp90 $\alpha$  showing 85% sequence identity to Hsp90 $\beta$ .