

# E-Cadherin Rabbit Polyclonal Antibody

Catalog No.: RA20109

## Basic Information

### Information

Reactivity	H
Immunogen	Recombinant Protein
Host	Rabbit
Isotype	IgG
Storage Buffer & Condition	1mg/ml in PBS, pH 7.4, containing 0.02% sodium azide and 50% glycerol.
Observed MW	135KD

### Applications

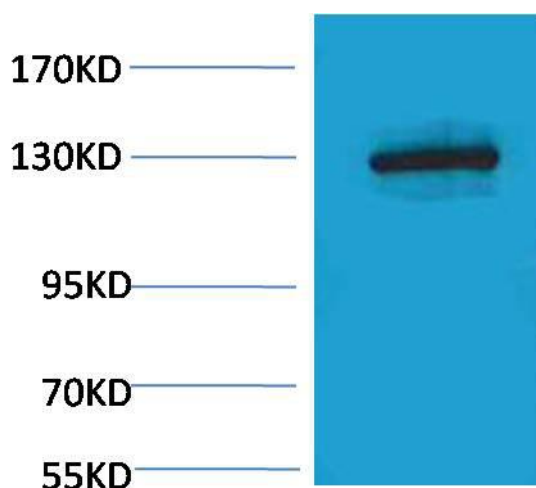
### Recommended Dilution

WB	1:1,000
IHC	1:500-1,000

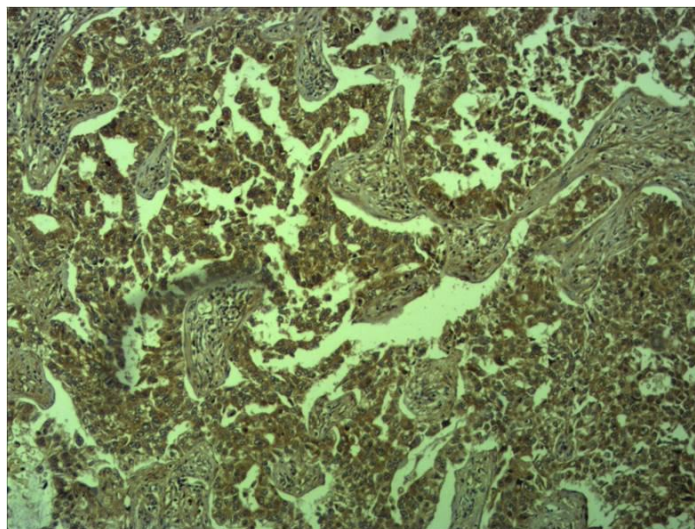
## Preparation & Storage

Storage	Store at -20°C. Stable for one year from the date of shipment.
Shipping	Bule Ice

## Experimental Data



Western blot analysis of HeLa, with E-Cadherin Rabbit pAb diluted at 1:2,000.



Immunohistochemical analysis of paraffin-embedded Human Lung carcinoma using E-Cadherin Rabbit pAb diluted at 1:500.

## Background

E-Cadherin is a calcium-dependent cell-cell adhesion glycoprotein composed of five extracellular cadherin repeats, a transmembrane region, and a highly conserved cytoplasmic tail.