

β-Catenin Rabbit Polyclonal Antibody

Catalog No.: RA20106

Basic Information

Information

Reactivity	H,M,R
Immunogen	Recombinant Protein
Host	Rabbit
Isotype	IgG1
Storage Buffer & Condition	1mg/ml in PBS, pH 7.4, containing 0.02% sodium azide and 50% glycerol.
Observed MW	92KD

Applications

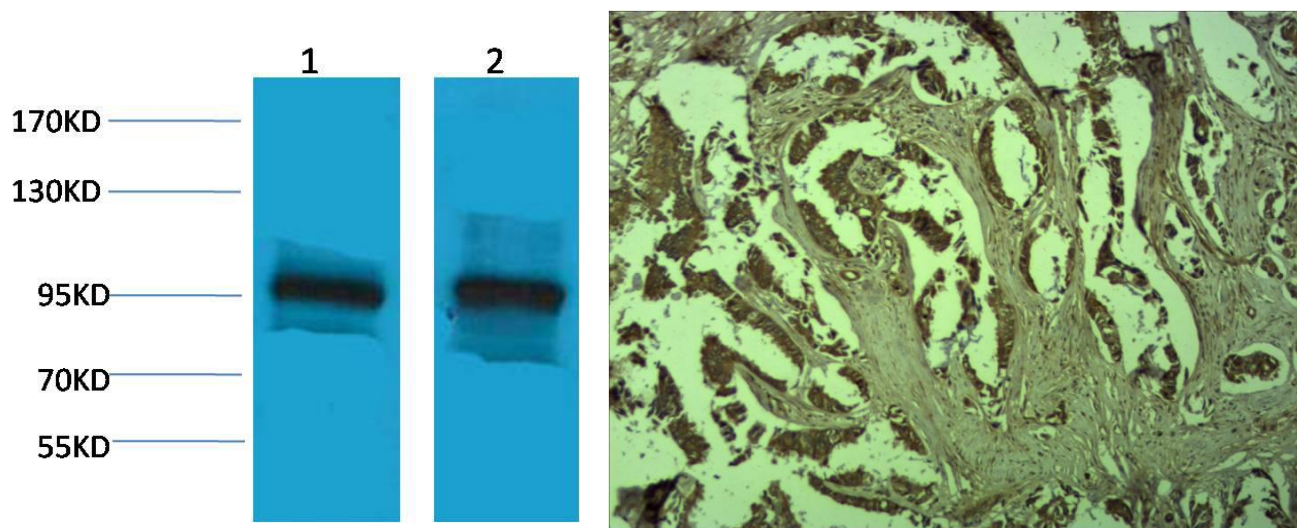
Recommended Dilution

WB	1:1,000
IHC	1:500-1,000

Preparation & Storage

Storage	Store at -20°C. Stable for one year from the date of shipment.
Shipping	Bule Ice

Experimental Data



Western blot analysis of 1)3T3, 2)Rat Liver, with β -Catenin Rabbit pAb diluted at 1:2,000.

Immunohistochemical analysis of paraffin-embedded Human breast carcinoma using β -catenin Rabbit pAb diluted at 1:500.

Background

The distinct peripheral cytosolic proteins, α , β and γ catenin (102, 94 and 86 kDa) are found in many tissues and bind to the conserved cytoplasmic tail domain of the cell adhesion cadherins. Catenins link E cadherin to other integral membrane or cytoplasmic proteins and are modulated by Wnt1 proto oncogene. The central core region of β catenin is involved in mediation of cadherin catenin complex interaction with EGFR. β -Catenin-mediated signalling is involved at several stages of vertebrate neural development.