

beta 1 Sodium Potassium ATPase Rabbit Polyclonal Antibody

Catalog No.: RA20105

Basic Information

Information

Reactivity	M,R,(H)
Immunogen	Synthetic Peptide
Host	Rabbit
Isotype	IgG
Storage Buffer & Condition	1mg/ml in PBS, pH 7.4, containing 0.02% sodium azide and 50% glycerol.
Observed MW	45-50KD

Applications

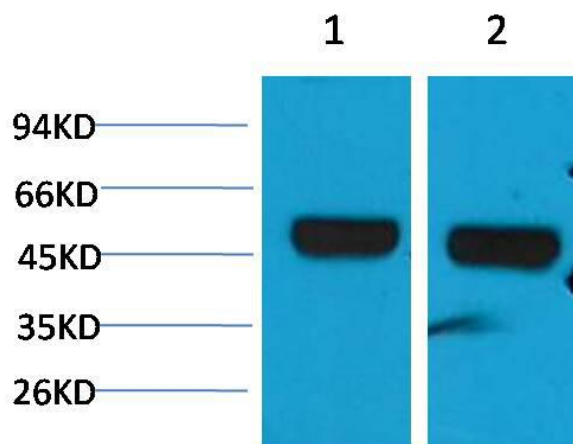
Recommended Dilution

WB	1:1,000-2,000
IHC	1:100-200

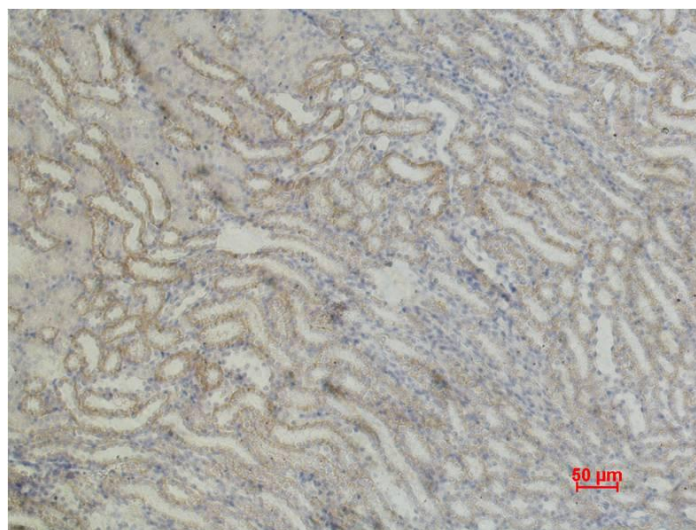
Preparation & Storage

Storage	Store at -20°C. Stable for one year from the date of shipment.
Shipping	Bule Ice

Experimental Data



Western blot analysis of 1) Mouse Brain, 2) Rat Brain, with beta 1 Sodium Potassium ATPase Rabbit pAb diluted at 1:2,000.



Immunohistochemical analysis of paraffin-embedded Mouse Kidney Tissue using beta 1 Sodium Potassium ATPase Rabbit pAb diluted at 1:200.

Background

beta 1 Sodium Potassium ATPase catalyzes the hydrolysis of ATP coupled with the exchange of Na^{+} and K^{+} ions across the plasma membrane. The beta subunit regulates, through assembly of alpha/beta heterodimers, the number of sodium pumps transported to the plasma membrane.