

LDHD Rabbit Polyclonal Antibody

Catalog No.: RA20085

Basic Information

Information

| | |
|----------------------------|--|
| Reactivity | H,M,R |
| Immunogen | Recombinant Protein |
| Host | Rabbit |
| Isotype | IgG |
| Storage Buffer & Condition | 1mg/ml in PBS, pH 7.4, containing 0.02% sodium azide and 50% glycerol. |
| Observed MW | 55KD |

Applications

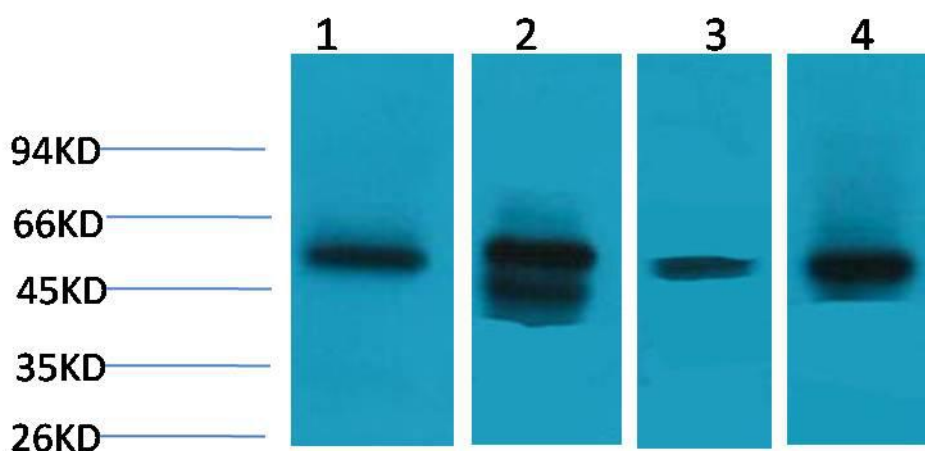
Recommended Dilution

| | |
|----|---------------|
| WB | 1:1,000-5,000 |
|----|---------------|

Preparation & Storage

| | |
|----------|--|
| Storage | Store at -20°C. Stable for one year from the date of shipment. |
| Shipping | Bule Ice |

Experimental Data



Western blot analysis of 1)Hela, 2)Mouse Skeletal Muscle , 3)Mouse Liver, 4)Rat Kidney with LDHD Rabbit pAb diluted at 1:5,000.

Background

LDHD belongs to the D-isomer specific 2-hydroxyacid dehydrogenase family. D-lactate and D-glycerate dehydrogenase activities have been found in a similar protein in yeast.