

# Histone H2A.X(Acetyl Lys5) Rabbit Polyclonal Antibody

## Catalog No.: RA20075

### Basic Information

#### Information

Reactivity	H,M,R
Immunogen	Synthetic Peptide
Host	Rabbit
Isotype	IgG
Storage Buffer & Condition	Rabbit Antiserum, containing 0.02% sodium azide and 50% glycerol.
Observed MW	15KD

#### Applications

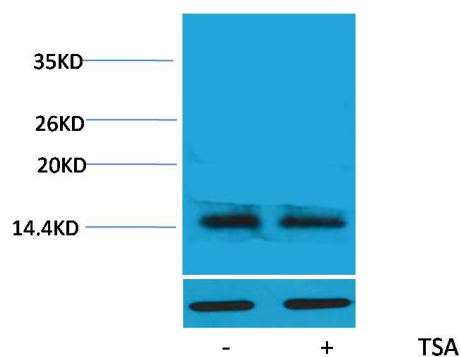
#### Recommended Dilution

WB	1:1,000-2,000
IHC	1:200-500

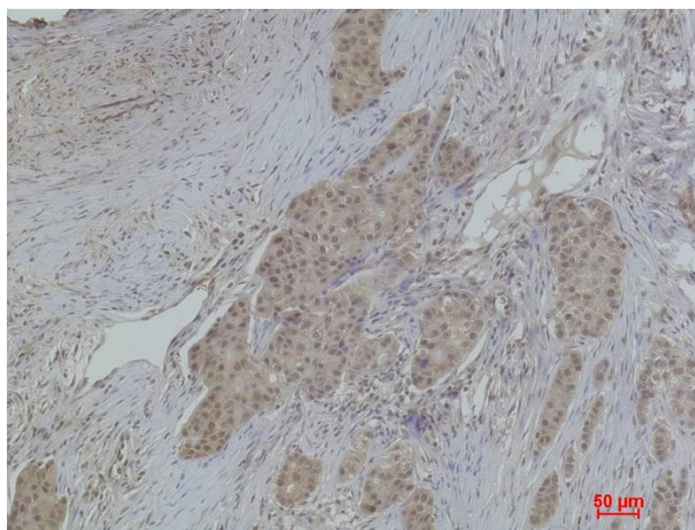
### Preparation & Storage

Storage	Store at -20°C. Stable for one year from the date of shipment.
Shipping	Bule Ice

## Experimental Data



Western blot analysis of extracts from HeLa cells, untreated (-) or treated with TSA (1  $\mu$ M, 18 hr; +), using Acetyl-Histone H2A.X (Lys5) Rabbit pAb (upper) 1:2,000 and  $\beta$ -actin (5B7) Mouse mAb (lower) 1:5,000.



Immunohistochemical analysis of paraffin-embedded Human Breast Carcinoma using Histone H2A.X (Acetyl Lys5) Rabbit pAb diluted at 1:500.

## Background

Histone H2A which replaces conventional H2A in a subset of nucleosomes. Nucleosomes wrap and compact DNA into chromatin, limiting DNA accessibility to the cellular machineries which require DNA as a template.