

Histone H1(Phospho Thr3) Rabbit Polyclonal Antibody

Catalog No.: RA20069

Basic Information

Information

Reactivity	H,M,R
Immunogen	Synthetic Peptide
Host	Rabbit
Isotype	IgG
Storage Buffer & Condition	Rabbit Antiserum, containing 0.02% sodium azide and 50% glycerol.
Observed MW	17-25KD

Applications

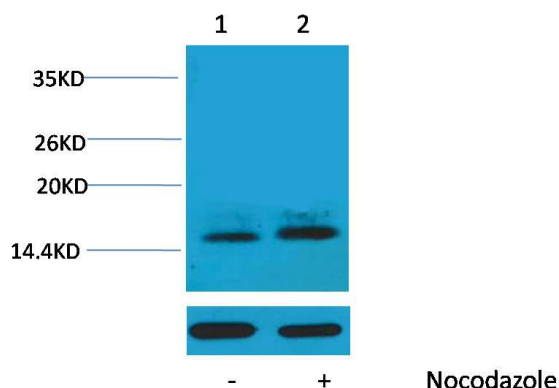
Recommended Dilution

WB	1:1,000-2,000
IHC	1:200-500

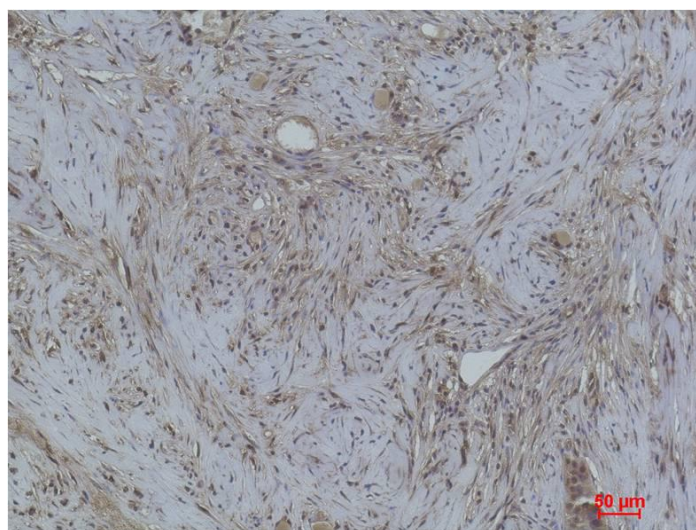
Preparation & Storage

Storage	Store at -20°C. Stable for one year from the date of shipment.
Shipping	Bule Ice

Experimental Data



Western blot analysis of extracts from HeLa cells, untreated (-) or treated with Nocodazole (1μg/ml, 24 hr; +), using Phospho-Histone H1(Thr3)Rabbit pAb (upper) 1:2,000 and β-actin (5B7) Mouse mAb (lower) 1:5000.



Immunohistochemical analysis of paraffin-embedded Human Breast Carcinoma using Histone H1 (Phospho Thr3)Rabbit pAb diluted at 1:500.

Background

Histone H1 is one of the five main histone protein families which are components of chromatin in eukaryotic cells. May play a key role in the control of gene expression during oogenesis and early embryogenesis, presumably through the perturbation of chromatin structure.