

# Histone H4(Acetyl Lys12) Rabbit Polyclonal Antibody

## Catalog No.: RA20067

### Basic Information

#### Information

Reactivity	H,M,R
Immunogen	Synthetic Peptide
Host	Rabbit
Isotype	IgG
Storage Buffer & Condition	Rabbit Antiserum, containing 0.02% sodium azide and 50% glycerol.
Observed MW	14KD

#### Applications

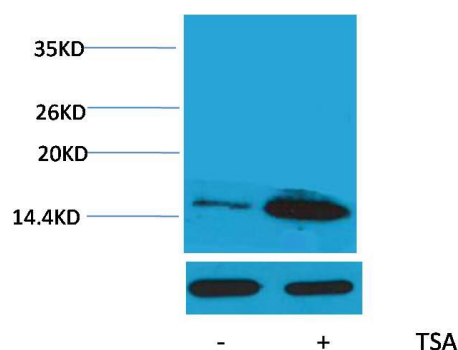
#### Recommended Dilution

WB	1:1,000-2,000
IHC	1:200-500

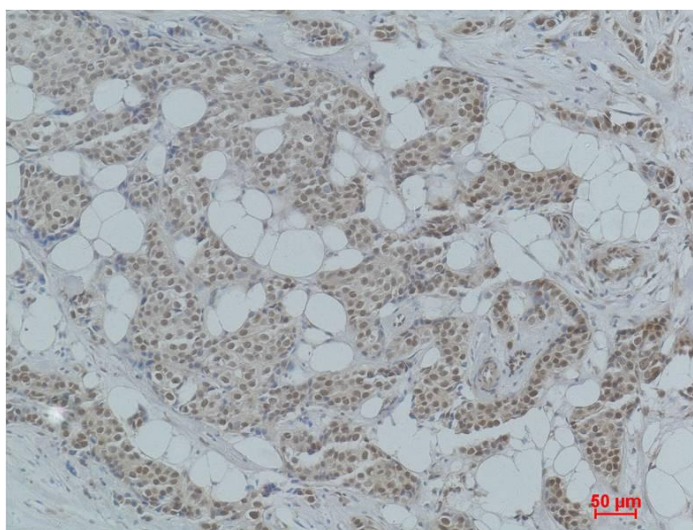
#### Preparation & Storage

Storage	Store at -20°C. Stable for one year from the date of shipment.
Shipping	Bule Ice

## Experimental Data



Western blot analysis of extracts from HeLa cells, untreated (-) or treated with TSA (1 $\mu$ M, 18 hr; +), using Acetyl-Histone H4 (Lys12) Rabbit pAb (upper) 1:2000 and  $\beta$ -actin (5B7) Mouse mAb (lower) 1:5000.



Immunohistochemical analysis of paraffin-embedded Human Breast Carcinoma using Histone H4 (Acetyl Lys12) Rabbit pAb diluted at 1:500.

## Background

Histone H4 is one of the 5 main histone proteins involved in the structure of chromatin in eukaryotic cells. H4 is a structural component of the nucleosome, and is subject to covalent modification, including acetylation and methylation, which may alter expression of genes located on DNA associated with its parent histone octamer.