

# Histone H2B(Acetyl Lys23) Rabbit Polyclonal Antibody

## Catalog No.: RA20065

### Basic Information

#### Information

Reactivity	H,M,R
Immunogen	Synthetic Peptide
Host	Rabbit
Isotype	IgG
Storage Buffer & Condition	Rabbit Antiserum, containing 0.02% sodium azide and 50% glycerol.
Observed MW	14KD

#### Applications

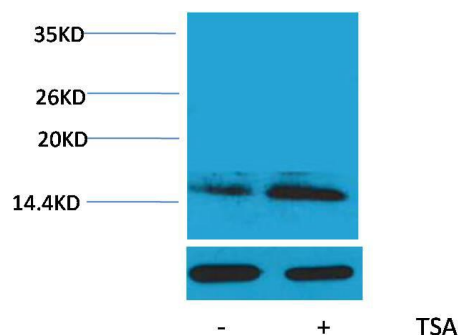
#### Recommended Dilution

WB	1:500-1,000
IHC	1:200-500

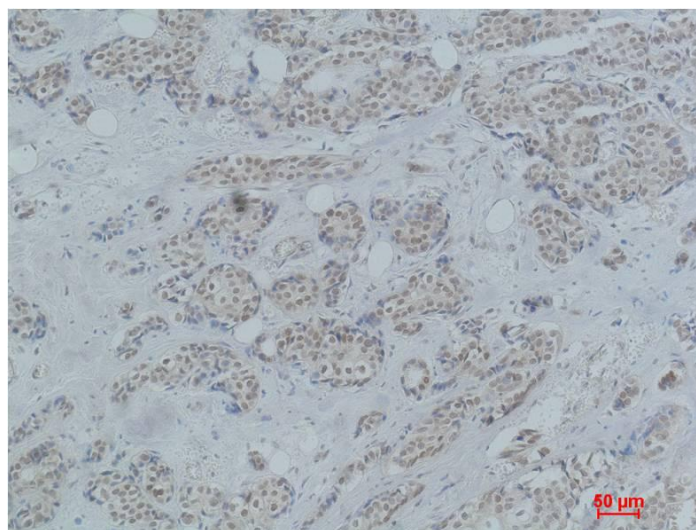
### Preparation & Storage

Storage	Store at -20°C. Stable for one year from the date of shipment.
Shipping	Bule Ice

## Experimental Data



Western blot analysis of extracts from HeLa cells, untreated (-) or treated with TSA (1 $\mu$ M, 18 hr; +), using Acetyl-Histone H2B (Lys23) Rabbit pAb (upper) 1:2000 and  $\beta$ -actin (5B7) Mouse mAb (lower) 1:5000.



Immunohistochemical analysis of paraffin-embedded Human Breast Carcinoma using Histone H2B (Acetyl Lys23) Rabbit pAb diluted at 1:500.

## Background

Histone H2B is one of the 5 main histone proteins involved in the structure of chromatin in eukaryotic cells.