

Histone H2A.Z(Acetyl Lys7) Rabbit Polyclonal Antibody

Catalog No.: RA20061

Basic Information

Information

Reactivity	H,M,R
Immunogen	Synthetic Peptide
Host	Rabbit
Isotype	IgG
Storage Buffer & Condition	Rabbit Antiserum, containing 0.02% sodium azide and 50% glycerol.
Observed MW	14KD

Applications

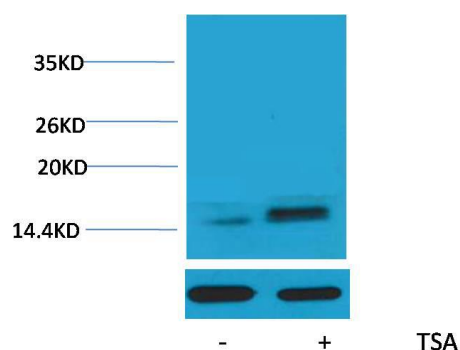
Recommended Dilution

WB	1:500-1,000
IHC	1:200-500

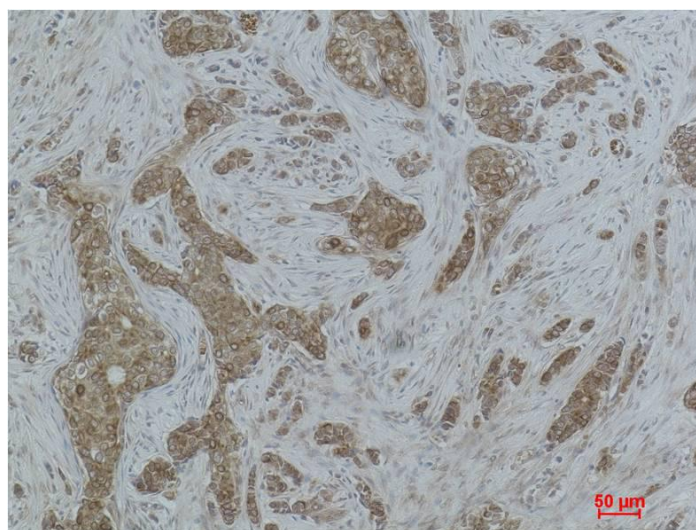
Preparation & Storage

Storage	Store at -20°C. Stable for one year from the date of shipment.
Shipping	Bule Ice

Experimental Data



Western blot analysis of extracts from HeLa cells, untreated (-) or treated with TSA (1 μM, 18 hr; +), using Acetyl-Histone H2A.Z (Lys7) Rabbit pAb (upper) 1:2000 and β-actin (5B7) Mouse mAb (lower) 1:5000.



Immunohistochemical analysis of paraffin-embedded Human Breast Carcinoma using Histone H2A.Z (Acetyl Lys7) Rabbit pAb diluted at 1:500.

Background

Histone H2A.Z is a protein that in humans is encoded by the H2AFZ gene. Histone H2AZ is a variant of histone H2A, and is used to mediate the thermosensory response, and is essential to perceive the ambient temperature.