

# Histone H2A(Acetyl Lys9) Rabbit Polyclonal Antibody

## Catalog No.: RA20059

### Basic Information

#### Information

Reactivity	H,M,R
Immunogen	Synthetic Peptide
Host	Rabbit
Isotype	IgG
Storage Buffer & Condition	Rabbit Antiserum, containing 0.02% sodium azide and 50% glycerol.
Observed MW	14KD

#### Applications

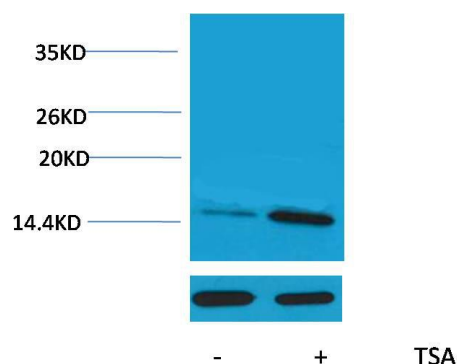
#### Recommended Dilution

WB	1:1,000-2,000
IHC	1:200-500

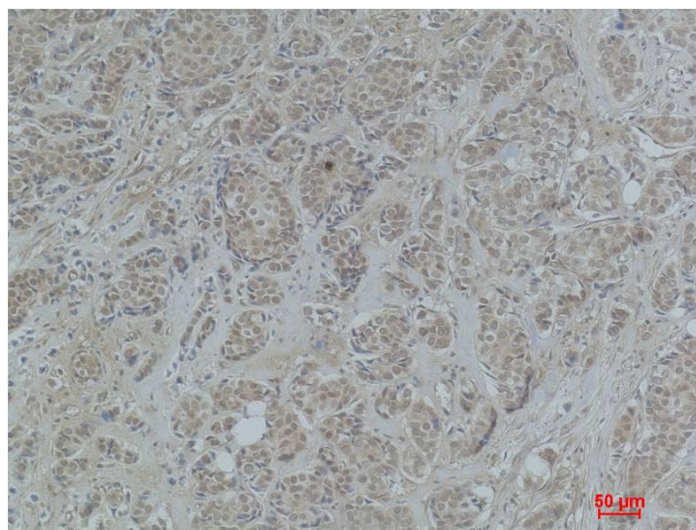
### Preparation & Storage

Storage	Store at -20°C. Stable for one year from the date of shipment.
Shipping	Bule Ice

## Experimental Data



Western blot analysis of extracts from HeLa cells, untreated (-) or treated with TSA (1 $\mu$ M, 18 hr; +), using Acetyl-Histone H2A (Lys9) Rabbit pAb (upper) 1:2000 and  $\beta$ -actin (5B7) Mouse mAb (lower) 1:5000.



Immunohistochemical analysis of paraffin-embedded Human Breast Carcinoma using Histone H2A (Acetyl Lys9) Rabbit pAb diluted at 1:500.

## Background

Histone H2A is one of the five main histone proteins involved in the structure of chromatin in eukaryotic cells. Core component of nucleosome. Nucleosomes wrap and compact DNA into chromatin, limiting DNA accessibility to the cellular machineries which require DNA as a template.