

Histone H2B(Tri Methyl Lys43) Rabbit Polyclonal Antibody

Catalog No.: RA20052

Basic Information

Information

Reactivity	H,M,R
Immunogen	Synthetic Peptide
Host	Rabbit
Isotype	IgG
Storage Buffer & Condition	Rabbit Antiserum, containing 0.02% sodium azide and 50% glycerol.
Observed MW	14KD

Applications

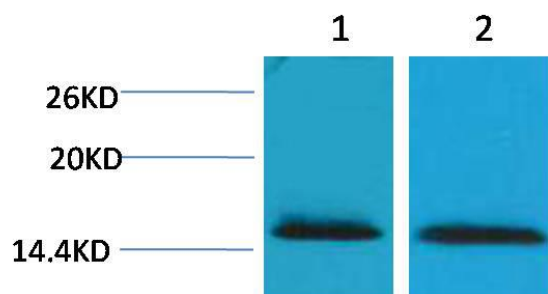
Recommended Dilution

WB	1:500-1,000
IHC	1:200-500

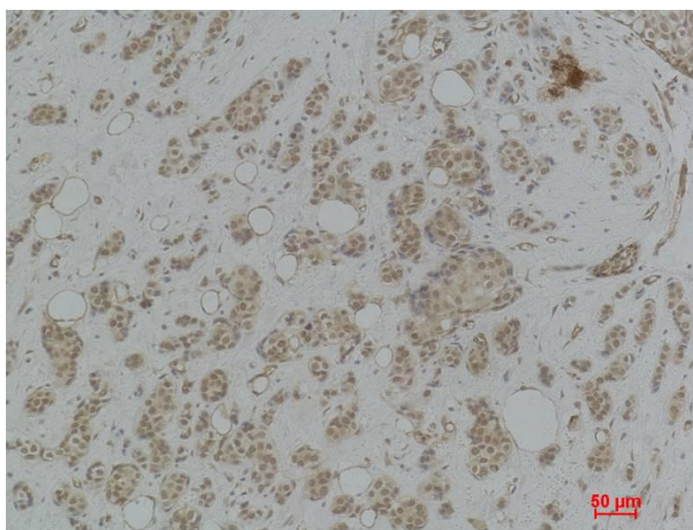
Preparation & Storage

Storage	Store at -20°C. Stable for one year from the date of shipment.
Shipping	Bule Ice

Experimental Data



Western blot analysis of 1)Hela, 2)3T3 with Histone H2B(Tri Methyl Lys43)Rabbit pAb diluted at 1:2,000.



Immunohistochemical analysis of paraffin-embedded Human Breast Carcinoma using Histone H2B(Tri Methyl Lys43)Rabbit pAb diluted at 1:500.

Background

Histone H2B is one of the 5 main histone proteins involved in the structure of chromatin in eukaryotic cells.