

# Histone H4(Tri Methyl Lys59) Rabbit Polyclonal Antibody

## Catalog No.: RA20043

### Basic Information

#### Information

|                            |   |
|----------------------------|---|
| Reactivity                 | H,M,R   |
| Immunogen                  | Synthetic Peptide   |
| Host                       | Rabbit  |
| Isotype                    | IgG   |
| Storage Buffer & Condition | Rabbit Antiserum, containing 0.02% sodium azide and 50% glycerol. |
| Observed MW                | 14KD  |

#### Applications

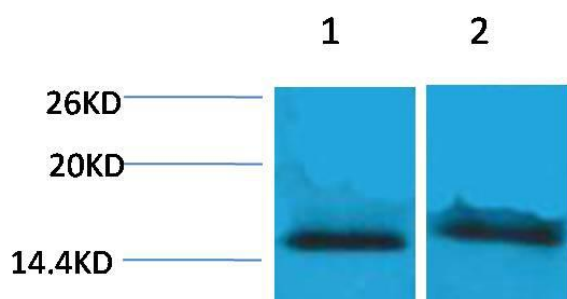
#### Recommended Dilution

|     |             |
|-----|-------------|
| WB  | 1:500-1,000 |
| IHC | 1:100-200   |

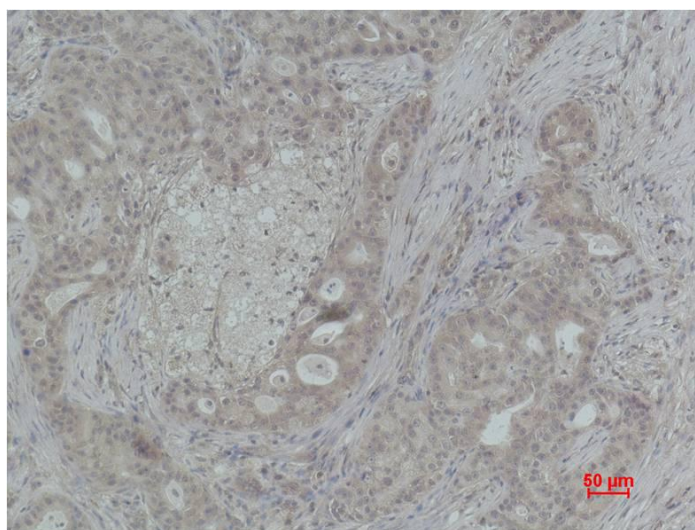
### Preparation & Storage

|          |  |
|----------|--|
| Storage  | Store at -20°C. Stable for one year from the date of shipment. |
| Shipping | Bule Ice   |

## Experimental Data



Western blot analysis of 1)HeLa, 2)3T3 with Histone H4(Tri Methyl Lys59) Rabbit pAb diluted at 1:2,000.



Immunohistochemical analysis of paraffin-embedded Human Breast Carcinoma using Histone H4(Tri Methyl Lys59) Rabbit pAb diluted at 1:200.

## Background

Histone H4 is one of the 5 main histone proteins involved in the structure of chromatin in eukaryotic cells. H4 is a structural component of the nucleosome, and is subject to covalent modification, including acetylation and methylation, which may alter expression of genes located on DNA associated with its parent histone octamer.