

Akt3 Rabbit Polyclonal Antibody

Catalog No.: RA20013

Basic Information

Information

| | |
|----------------------------|--|
| Reactivity | H,M,R |
| Immunogen | Recombinant Protein |
| Host | Rabbit |
| Isotype | IgG |
| Storage Buffer & Condition | 1mg/ml in PBS, pH 7.4, containing 0.02% sodium azide and 50% glycerol. |
| Observed MW | 60KD |

Applications

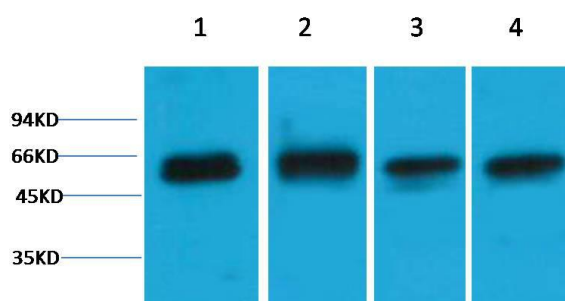
Recommended Dilution

| | |
|-----|---------------|
| WB | 1:1,000-2,000 |
| IHC | 1:500-1,000 |

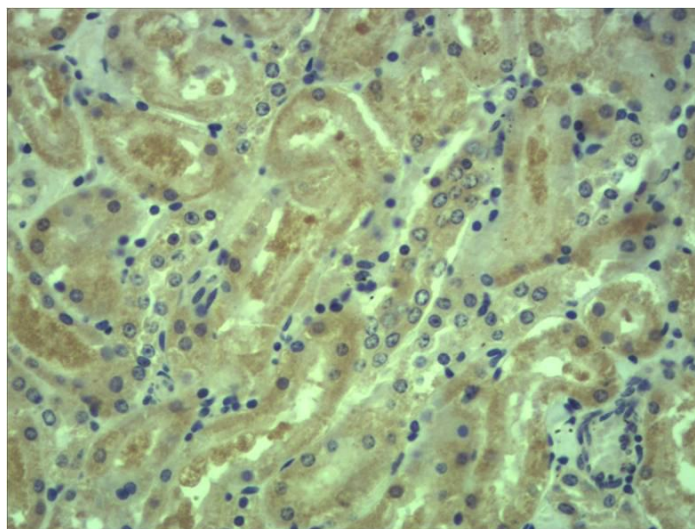
Preparation & Storage

| | |
|----------|--|
| Storage | Store at -20°C. Stable for one year from the date of shipment. |
| Shipping | Bule Ice |

Experimental Data



Western blot analysis of 1)HeLa, 2)3T3, 3)Mouse Brain, 4)Rat Brain tissue with Akt3 Rabbit pAb diluted at 1:2,000.



Immunohistochemical analysis of paraffin-embedded Mouse Kidney Tissue using Akt3 Rabbit pAb diluted at 1:500.

Background

RAC-gamma serine/threonine-protein kinase is an enzyme that in humans is encoded by the AKT3 gene. This kinase has been shown to be stimulated by platelet-derived growth factor (PDGF), insulin, and insulin-like growth factor 1 (IGF1).