

α -Skeletal Muscle Actin Rabbit Polyclonal Antibody

Catalog No.: RA20008

Basic Information

Information

Reactivity	H,M,R
Immunogen	Synthetic Peptide
Host	Rabbit
Isotype	IgG
Storage Buffer & Condition	1mg/ml in PBS, pH 7.4, containing 0.02% sodium azide and 50% glycerol.
Observed MW	42KD

Applications

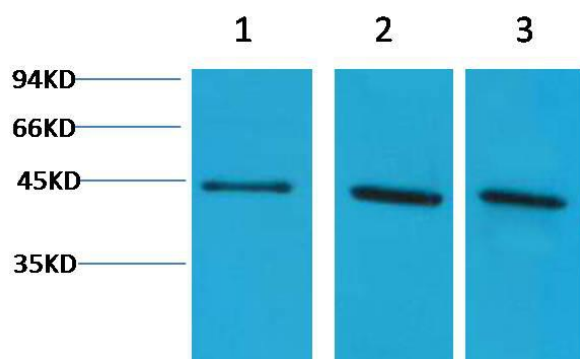
Recommended Dilution

WB	1:1,000-2,000
IHC	1:200-500

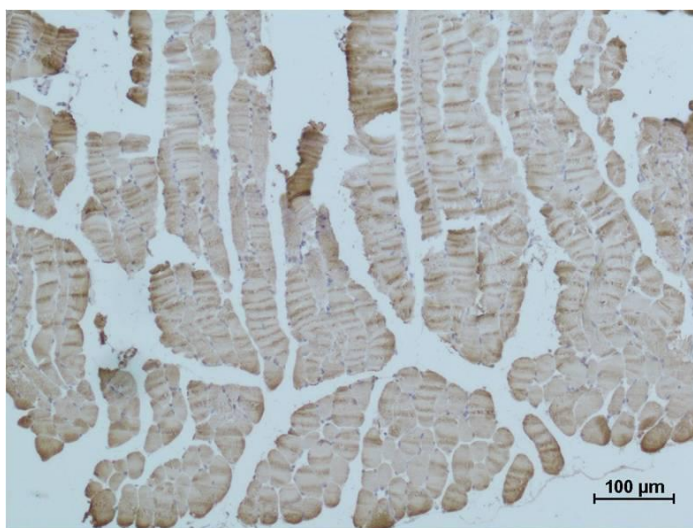
Preparation & Storage

Storage	Store at -20°C. Stable for one year from the date of shipment.
Shipping	Bule Ice

Experimental Data



Western blot analysis of 1)Hela, 2)3T3, 3)Rat Kidney tissue with α skeletal muscle actin Rabbit pAb diluted at 1:2,000.



Immunohistochemical analysis of paraffin-embedded Mouse Skeletal Muscle Tissue using α skeletal muscle actin Rabbit pAb diluted at 1:500.

Background

Actin, alpha skeletal muscle is a protein that in humans is encoded by the ACTA1 gene. Actin alpha 1 which is expressed in skeletal muscle is one of six different actin isoforms which have been identified. Actins are highly conserved proteins that are involved in cell motility, structure and integrity. Alpha actins are a major constituent of the contractile apparatus.