

# **$\alpha$ -Smooth Muscle Actin Rabbit Polyclonal Antibody**

## **Catalog No.: RA20007**

### **Basic Information**

#### **Information**

|                                       |  |
|---------------------------------------|--|
| <b>Reactivity</b>                     | H,M,R  |
| <b>Immunogen</b>                      | Synthetic Peptide  |
| <b>Host</b>                           | Rabbit   |
| <b>Isotype</b>                        | IgG  |
| <b>Storage Buffer &amp; Condition</b> | 1mg/ml in PBS, pH 7.4, containing 0.02% sodium azide and 50% glycerol. |
| <b>Observed MW</b>                    | 42KD   |

#### **Applications**

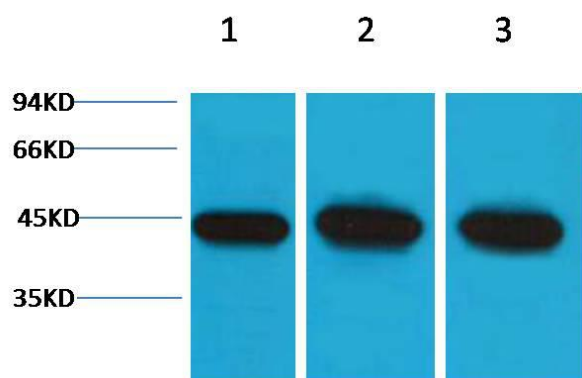
#### **Recommended Dilution**

|            |               |
|------------|---------------|
| <b>WB</b>  | 1:2,000-5,000 |
| <b>IHC</b> | 1:500-1,000   |

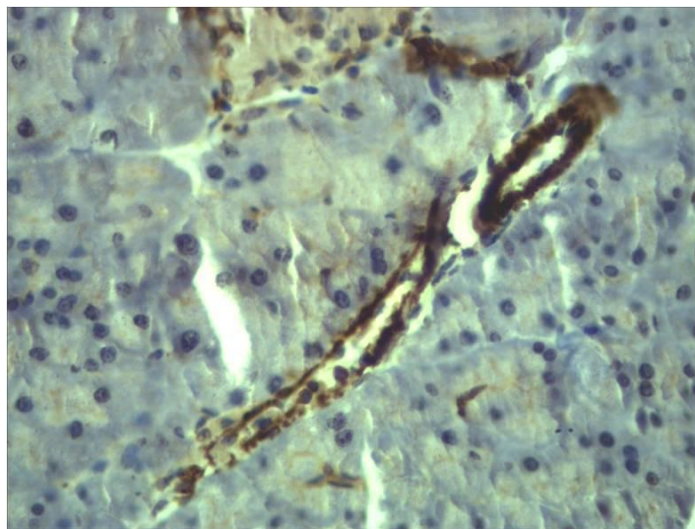
#### **Preparation & Storage**

|                 |  |
|-----------------|--|
| <b>Storage</b>  | Store at -20°C. Stable for one year from the date of shipment. |
| <b>Shipping</b> | Bule Ice   |

## Experimental Data



Western blot analysis of 1)Hela, 2)3T3, 3)Rat Kidney tissue with  $\alpha$ -Smooth Muscle Actin Rabbit pAb diluted at 1:5,000.



Immunohistochemical analysis of paraffin-embedded Mouse Colon Tissue using  $\alpha$ -Smooth Muscle Actin Rabbit pAb diluted at 1:500.

## Background

Actin is a globular multi-functional protein that forms microfilaments. ACTA2 codes for an  $\alpha$ -actin located in the smooth muscle, and also in vascular smooth muscle.