

## c-Fos Rabbit Polyclonal Antibody

Catalog No.: RA20003

### Basic Information

#### Information

Reactivity	H,M,R
Immunogen	Recombinant Protein
Host	Rabbit
Isotype	IgG
Storage Buffer & Condition	1mg/ml in PBS, pH 7.4, containing 0.02% sodium azide and 50% glycerol.
Observed MW	62KD

#### Applications

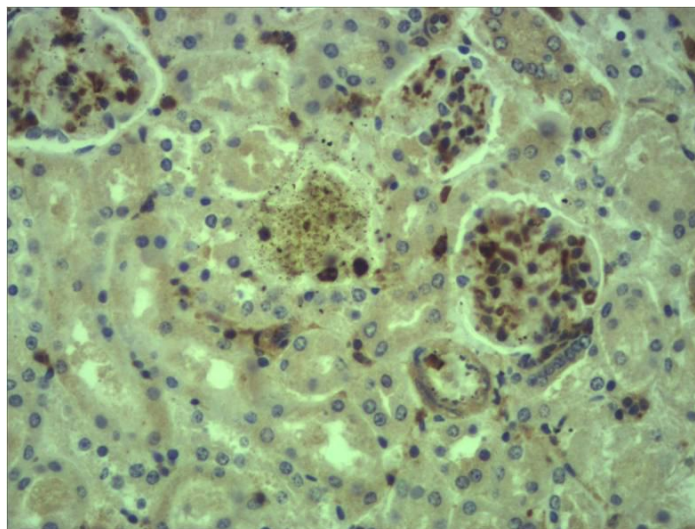
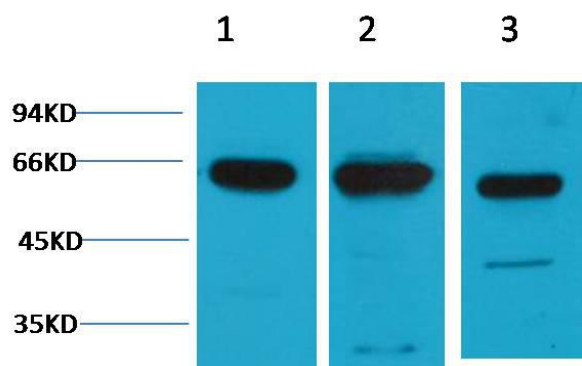
#### Recommended Dilution

WB	1:1,000-2,000
IHC	1:500-1,000

### Preparation & Storage

Storage	Store at -20°C. Stable for one year from the date of shipment.
Shipping	Bule Ice

## Experimental Data



Western blot analysis of 1)HeLa, 2)Mouse Brain, 3)Rat Brain tissue with c-Fos Rabbit Polyclonal Antibody diluted at 1:2,000.

Immunohistochemical analysis of paraffin-embedded Mouse Kidney Tissue using c-Fos Rabbit pAb diluted at 1:500.

## Background

c-Fos is a proto-oncogene that is the human homolog of the retroviral oncogene v-fos. c-fos is 380 amino acid protein with a basic leucine zipper region for dimerisation and DNA-binding and a transactivation domain at C-terminus.