

Rubisco(Large Chain) Mouse Monoclonal Antibody(3G7)

Catalog No.: RA10460

Basic Information

Information

| | |
|----------------------------|--|
| Reactivity | Various Plants |
| Immunogen | Protein |
| Host | Mouse |
| Isotype | IgG1 |
| Storage Buffer & Condition | 1mg/ml in PBS, pH 7.4, containing 0.02% sodium azide and 50% glycerol. |
| Observed MW | 53KD |

Applications

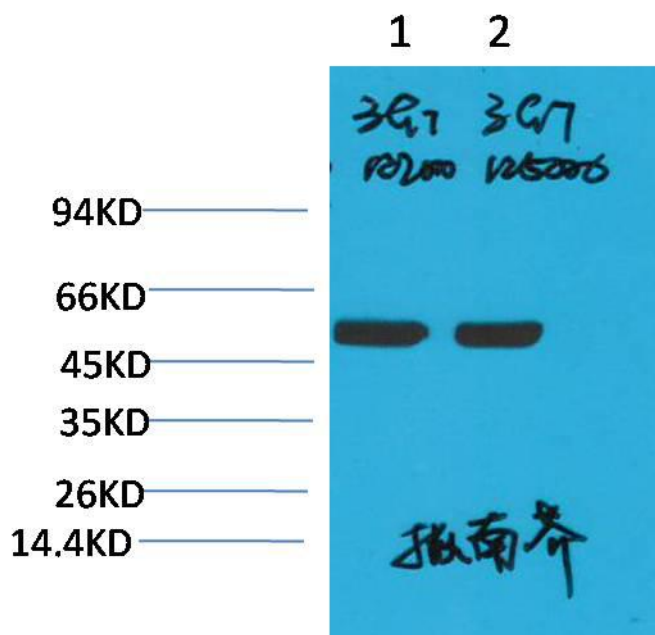
Recommended Dilution

| | |
|----|----------------|
| WB | 1:2,000-10,000 |
|----|----------------|

Preparation & Storage

| | |
|----------|--|
| Storage | Store at -20°C. Stable for one year from the date of shipment. |
| Shipping | Bule Ice |

Experimental Data



Western blot analysis of Arabidopsis with Rubisco(Large Chain) Mouse mAb diluted at 1)1:2,000 2)1:5,000

Background

Ribulose-1,5-bisphosphate carboxylase oxygenase,commonly known by the abbreviation RuBisCO,is an enzyme involved in the first major step of carbon fixation,a process by which atmospheric carbon dioxide is converted by plants to energy-rich molecules such as glucose.