

**alpha-Syneuclein Mouse Monoclonal Antibody(2E2)****Catalog No.: RA10412****Basic Information****Information**

<b>Reactivity</b>	H
<b>Immunogen</b>	Recombinant Protein
<b>Host</b>	Mouse
<b>Isotype</b>	IgG1
<b>Storage Buffer &amp; Condition</b>	1mg/ml in PBS, pH 7.4, containing 0.02% sodium azide and 50% glycerol.
<b>Observed MW</b>	14KD

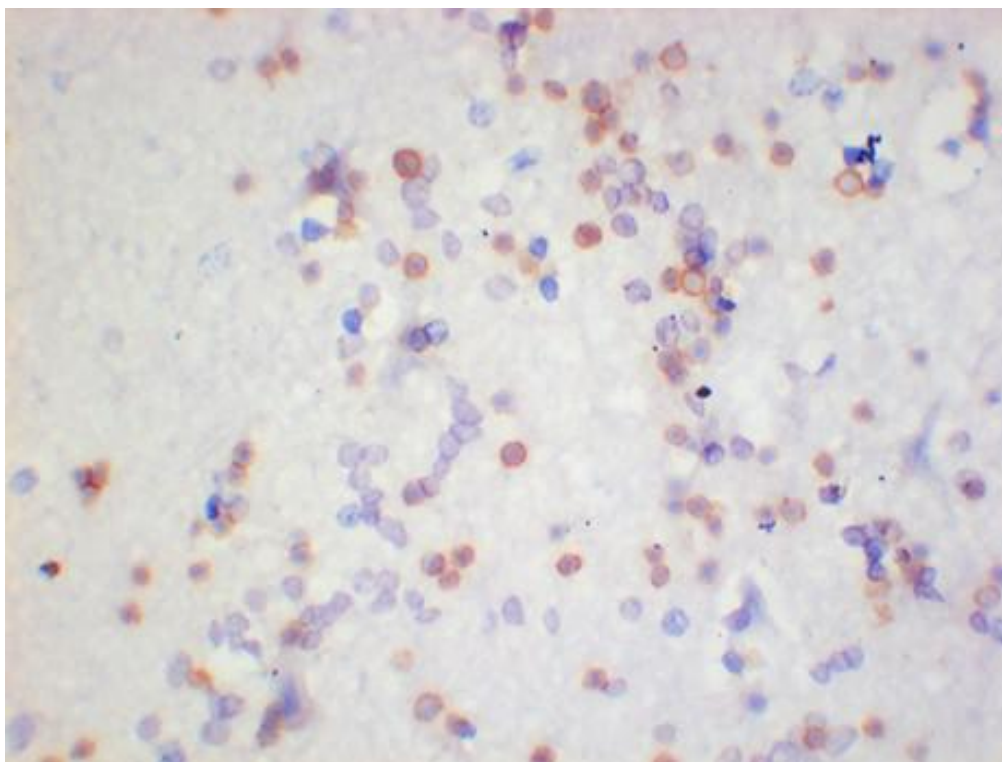
**Applications****Recommended Dilution**

<b>IHC</b>	1:100-200
<b>ELISA</b>	1:2,000-10,000

**Preparation & Storage**

<b>Storage</b>	Store at -20°C. Stable for one year from the date of shipment.
<b>Shipping</b>	Bule Ice

## Experimental Data



Immunohistochemical analysis of paraffin-embedded Human Brain Tissue using alpha Synuclein Mouse mAb diluted at 1:200.

## Background

Genetic alterations of SNCA resulting in aberrant polymerization into fibrils, are associated with several neurodegenerative diseases (synucleinopathies). SNCA fibrillar aggregates represent the major non A-beta component of Alzheimer disease amyloid plaque, and a major component of Lewy body inclusions.