

## P21 Mouse mAb (Mix-mA)

Catalog No.: RA10407

### Basic Information

#### Information

Reactivity	H
Immunogen	Synthetic Peptide
Host	Mouse
Isotype	IgG1
Storage Buffer & Condition	1mg/ml in PBS, pH 7.4, containing 0.02% sodium azide and 50% glycerol.
Observed MW	21KD

#### Applications

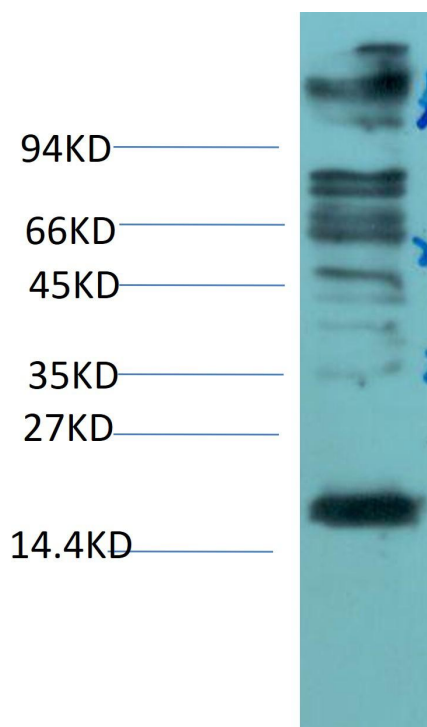
#### Recommended Dilution

WB	1:1,000-2,000
----	---------------

#### Preparation & Storage

Storage	Store at -20°C. Stable for one year from the date of shipment.
Shipping	Bule Ice

## Experimental Data



Western blot analysis of 293T Cell Lysate using P21 Mouse Monoclonal Ab diluted at 1:2,000

## Background

p21 / WAF1 / CIP1 also known as cyclin-dependent kinase inhibitor 1 or CDK-interacting protein 1 is a protein that in humans is encoded by the CDKN1A gene. p21 is a potent cyclin-dependent kinase inhibitor (CKI). The p21 (CIP1/WAF1) protein binds to and inhibits the activity of cyclin-CDK2,-CDK1,and -CDK4/6 complexes,and thus functions as a regulator of cell cycle progression at G1 and S phase.