

EGFR Mouse Monoclonal Antibody(M6)

Catalog No.: RA10400

Basic Information

Information

Reactivity	H
Immunogen	Synthetic Peptide
Host	Mouse
Isotype	IgG1
Storage Buffer & Condition	1mg/ml in PBS, pH 7.4, containing 0.02% sodium azide and 50% glycerol.
Observed MW	170KD

Applications

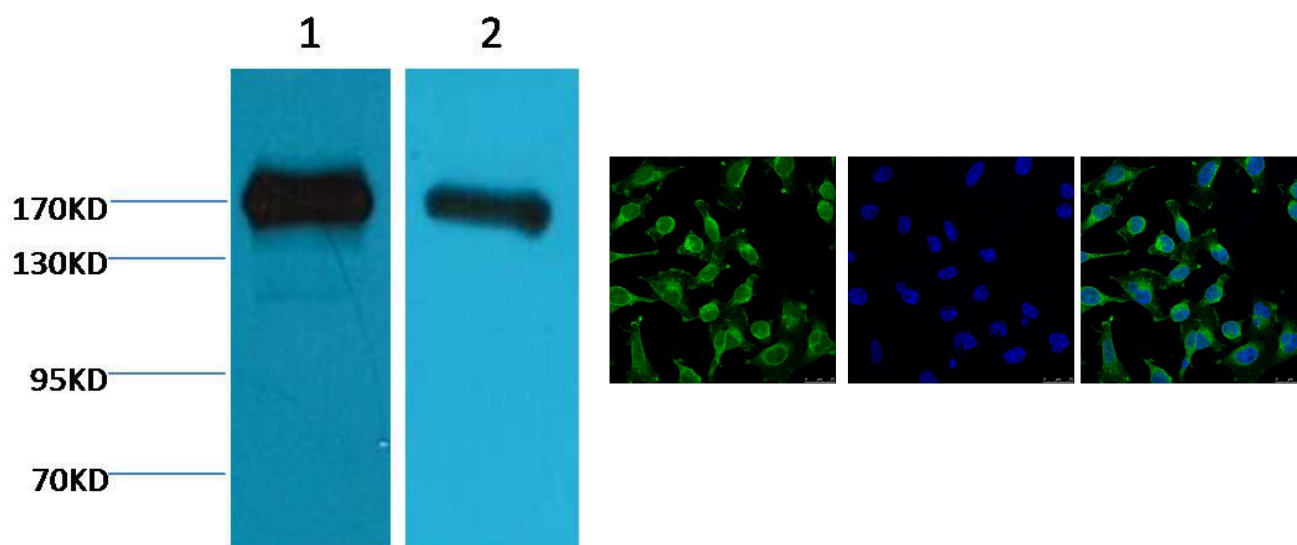
Recommended Dilution

WB	1:1,000-3,000
IHC	1:100-200
IF	1:100-200
IP	1:200

Preparation & Storage

Storage	Store at -20°C. Stable for one year from the date of shipment.
Shipping	Bule Ice

Experimental Data



Western blot analysis of 1)A431 ,2)Hela, with EGFR Mouse Monoclonal Antibody diluted at 1:2,000.

IF analysis of HeLa with EGFR Mouse Monoclonal Antibody(M6)(Left) and DAPI (Right) diluted at 1:100.

Background

The epidermal growth factor receptor (EGFR; ErbB-1; HER1 in humans) is the cell-surface receptor for members of the epidermal growth factor family (EGF-family) of extracellular protein ligands. Known ligands include EGF,TGFA/TGF- α ,amphiregulin,epigen/EPGN,BTC/betacellulin,epiregulin/EREG and HBEGF/heparin-binding EGF. Ligand binding triggers receptor homo- and/or heterodimerization and autophosphorylation on key cytoplasmic residues. The phosphorylated receptor recruits adapter proteins like GRB2 which in turn activates complex downstream signaling cascades.