

# CD16 Mouse Monoclonal Antibody(Q32)

Catalog No.: RA10368

## Basic Information

### Information

Reactivity	H
Immunogen	Synthetic Peptide
Host	Mouse
Isotype	IgG1
Storage Buffer & Condition	1mg/ml in PBS, pH 7.4, containing 0.02% sodium azide and 50% glycerol.
Observed MW	45KD

### Applications

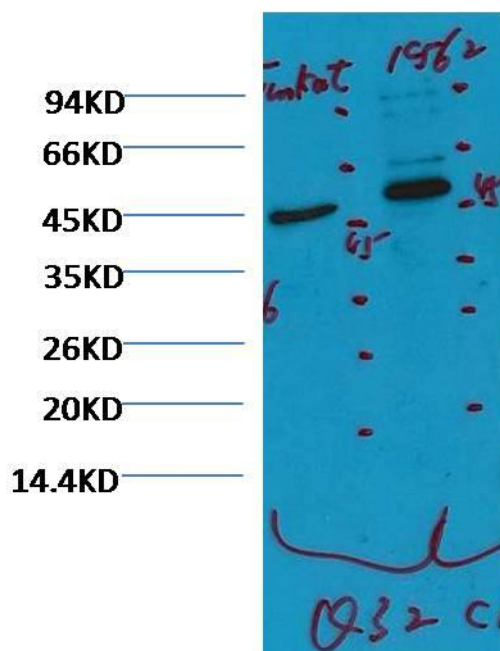
### Recommended Dilution

WB	1:1,000-2,000
IHC	1:100-200

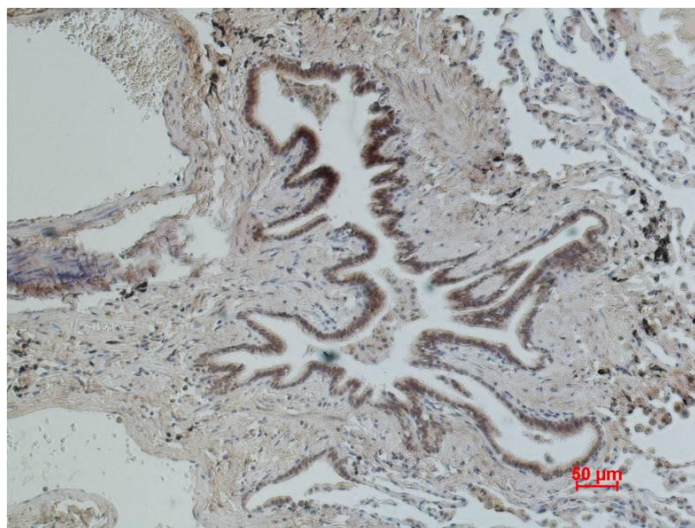
## Preparation & Storage

Storage	Store at -20°C. Stable for one year from the date of shipment.
Shipping	Bule Ice

## Experimental Data



Western blot analysis of 1)Jurkat, 2)K562 CD16 Mouse mAb diluted at 1:2000.



Immunohistochemical analysis of paraffin-embedded Human Lung Carcinoma using CD16 Mouse mAb diluted at 1:200.

## Background

CD16 is a low affinity Fc receptor. It is a cluster of differentiation found on the surface of natural killer cells, neutrophil polymorphonuclear leukocytes, monocytes and macrophages.