

**alpha Lactalbumin Mouse Monoclonal Antibody(9E9)****Catalog No.: RA10362****Basic Information****Information**

<b>Reactivity</b>	H,Bovine
<b>Immunogen</b>	Synthetic Peptide
<b>Host</b>	Mouse
<b>Isotype</b>	IgG1
<b>Storage Buffer &amp; Condition</b>	1mg/ml in PBS, pH 7.4, containing 0.02% sodium azide and 50% glycerol.
<b>Observed MW</b>	16KD

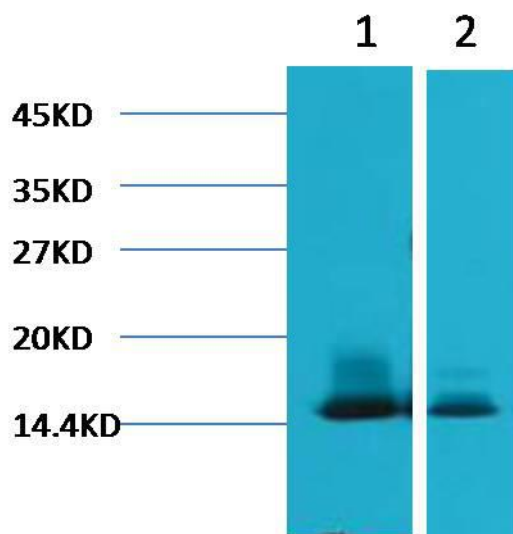
**Applications****Recommended Dilution**

<b>WB</b>	1:1,000
-----------	---------

**Preparation & Storage**

<b>Storage</b>	Store at -20°C. Stable for one year from the date of shipment.
<b>Shipping</b>	Bule Ice

## Experimental Data



Western blot analysis of 1)Human Milk, 2)Milk, with alpha Lactalbumin Mouse mAb diluted at 1:3,000.

## Background

In primates, alpha-lactalbumin expression is upregulated in response to the hormone prolactin and increases the production of lactose.  $\alpha$ -Lactalbumin forms the regulatory subunit of the lactose synthase (LS) heterodimer and  $\beta$ -1,4-galactosyltransferase (beta4Gal-T1) forms the catalytic component.