

**IDE Insulin Degrading Enzyme Mouse Monoclonal
Antibody(3H4)
Catalog No.: RA10361**

Basic Information

Information

Reactivity	H
Immunogen	Synthetic Peptide
Host	Mouse
Isotype	IgG1
Storage Buffer & Condition	1mg/ml in PBS, pH 7.4, containing 0.02% sodium azide and 50% glycerol.
Observed MW	118KD

Applications

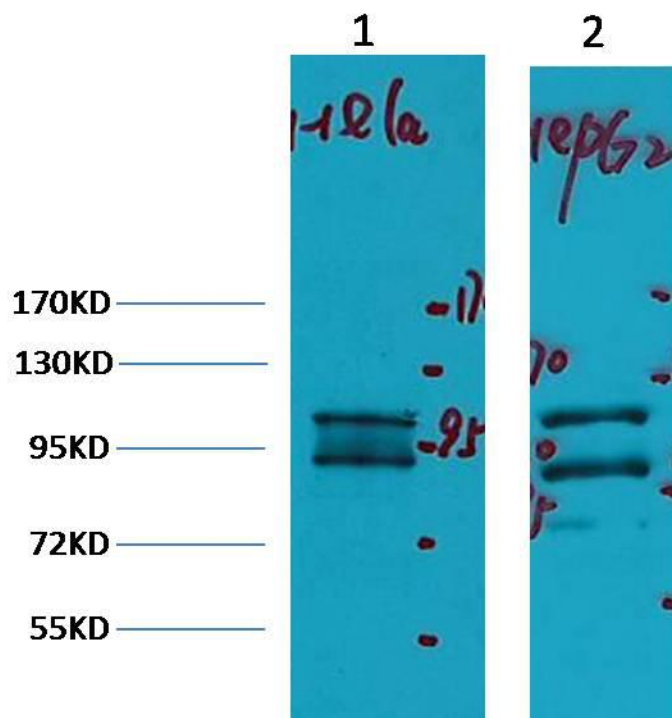
Recommended Dilution

WB	1:1,000
IHC	1:200

Preparation & Storage

Storage	Store at -20°C. Stable for one year from the date of shipment.
Shipping	Bule Ice

Experimental Data



Western blot analysis of 1)HeLa, 2)HepG2,with IDE Mouse mAb diluted at 1:2,000.

Background

Insulin Degrading Enzyme (IDE) is a large zinc-binding protease of the M16A metalloprotease subfamily known to cleave multiple short polypeptides that vary considerably in sequence. IDE was first identified by its ability to degrade the B chain of the hormone insulin. This activity was observed over fifty years ago, though the enzyme specifically responsible for B chain cleavage was identified more recently.