

CD23 Mouse Monoclonal Antibody (10H2)

Catalog No.: RA10360

Basic Information

Information

Reactivity	H,M,R
Immunogen	Synthetic Peptide
Host	Mouse
Isotype	IgG1
Storage Buffer & Condition	1mg/ml in PBS, pH 7.4, containing 0.02% sodium azide and 50% glycerol.
Observed MW	36KD

Applications

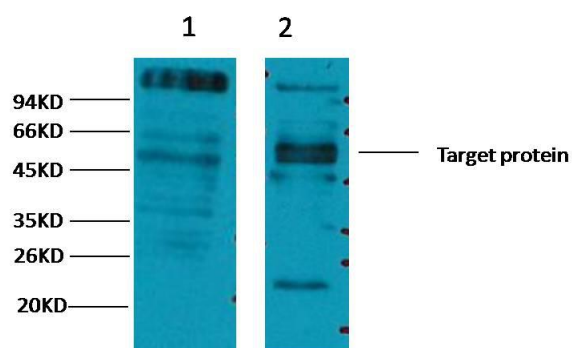
Recommended Dilution

WB	1:1,000
IHC	1:200-500

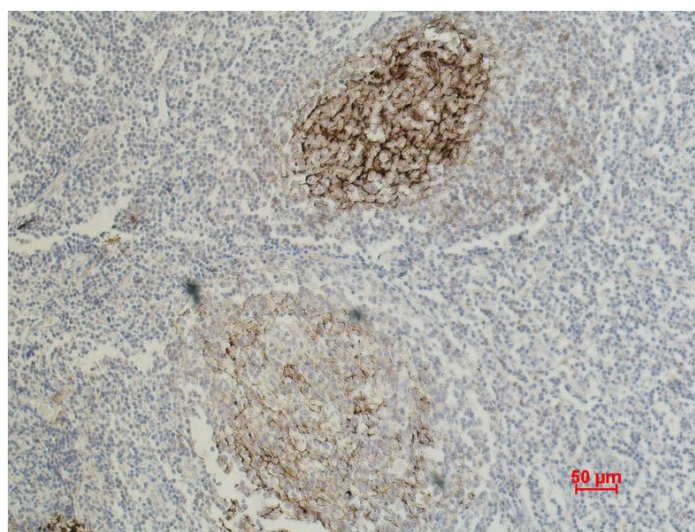
Preparation & Storage

Storage	Store at -20°C. Stable for one year from the date of shipment.
Shipping	Bule Ice

Experimental Data



Western blot analysis of 1)HeLa, 2)Mouse Brain tissue ,with CD23 Mouse mAb diluted at 1:2,000.



Immunohistochemical analysis of paraffin-embedded Human Tonsil Carcinoma using CD23 Mouse mAb diluted at 1:500.

Background

CD23,also known as Fc epsilon RII,or FcεRII,is the "low-affinity" receptor for IgE,an antibody isotype involved in allergy and resistance to parasites,and is important in regulation of IgE levels. Unlike many of the antibody receptors,CD23 is a C-type lectin. It is found on mature B cells,activated macrophages,eosinophils,follicular dendritic cells,and platelets.