

# AFP alpha 1 Fetoprotein Mouse Monoclonal Antibody(17C5)

Catalog No.: RA10353

## Basic Information

### Information

Reactivity	H
Immunogen	Synthetic Peptide
Host	Mouse
Isotype	IgG1
Storage Buffer & Condition	1mg/ml in PBS, pH 7.4, containing 0.02% sodium azide and 50% glycerol.
Observed MW	70KD

### Applications

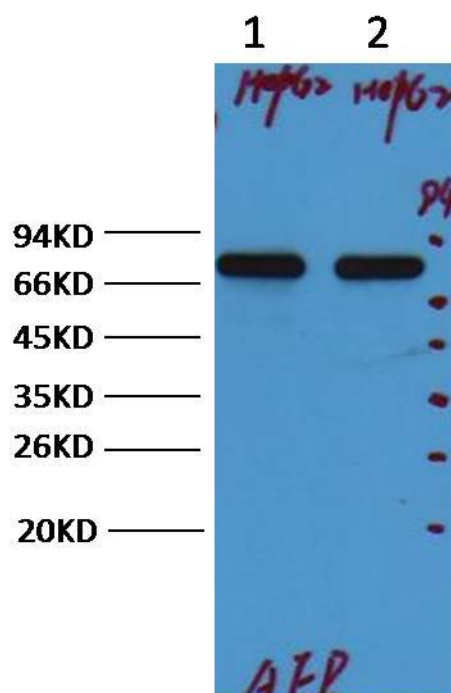
### Recommended Dilution

WB	1:2,000
IHC	1:200-500

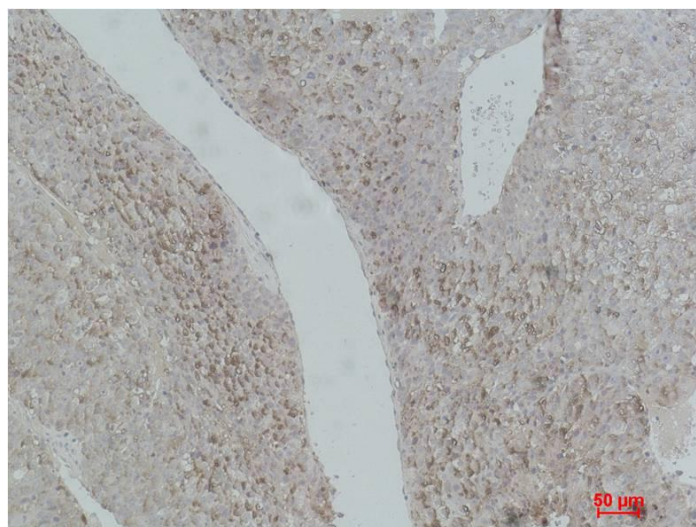
## Preparation & Storage

Storage	Store at -20°C. Stable for one year from the date of shipment.
Shipping	Bule Ice

## Experimental Data



Western blot analysis of HepG2, with AFP Mouse mAb diluted at 1:2,000.



Immunohistochemical analysis of paraffin-embedded Human Hepatocarcinoma using AFP Mouse mAb diluted at 1:500.

## Background

alpha-1-fetoprotein (AFP) is a protein that in humans is encoded by the AFP gene. The AFP gene is located on the q arm of chromosome 4 (4q25). AFP is a major plasma protein produced by the yolk sac and the liver during fetal development that is thought to be the fetal form of serum albumin. AFP binds to copper, nickel, fatty acids and bilirubin and is found in monomeric, dimeric and trimeric forms.