

P38 Mouse Monoclonal Antibody(2F12)

Catalog No.: RA10349

Basic Information

Information

| | |
|----------------------------|--|
| Reactivity | H,M,R |
| Immunogen | Recombinant Protein |
| Host | Mouse |
| Isotype | IgG1 |
| Storage Buffer & Condition | 1mg/ml in PBS, pH 7.4, containing 0.02% sodium azide and 50% glycerol. |
| Observed MW | ~40KD |

Applications

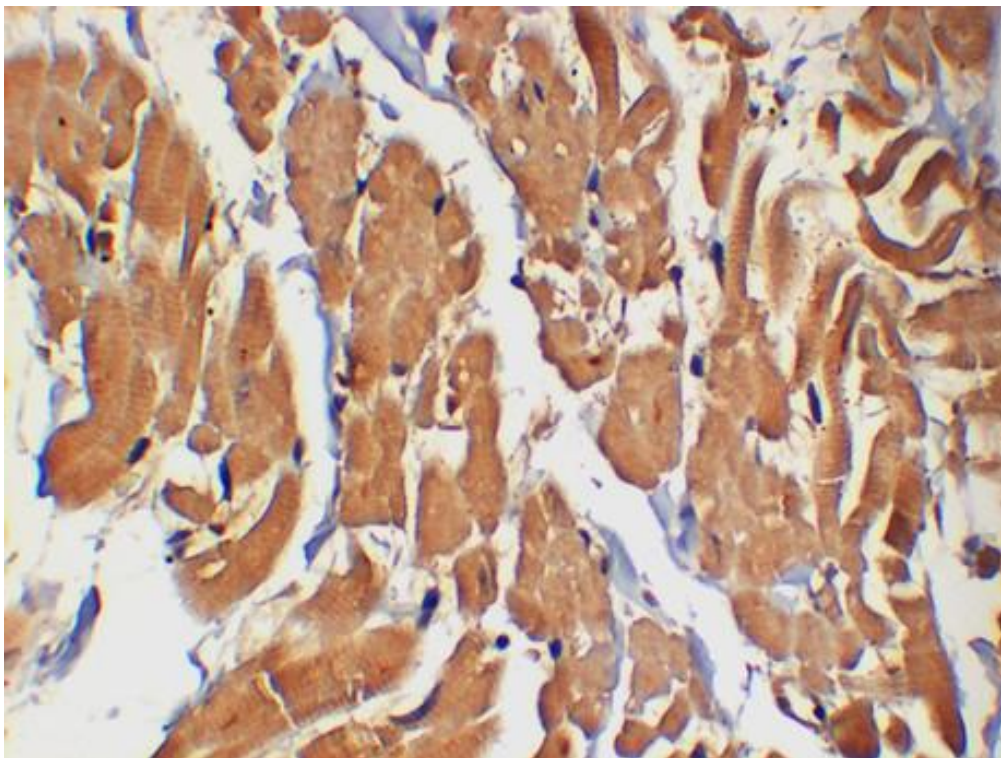
Recommended Dilution

| | |
|-----|---------------|
| IHC | 1:1,000-2,000 |
|-----|---------------|

Preparation & Storage

| | |
|----------|--|
| Storage | Store at -20°C. Stable for one year from the date of shipment. |
| Shipping | Bule Ice |

Experimental Data



Immunohistochemical analysis of paraffin-embedded Rat Kidney Tissue Lysate using P38 Mouse Monoclonal mAb diluted at 1:2,000.

Background

p38 MAP kinase (MAPK) is the mammalian orthologue of the yeast HOG kinase that participates in a signaling cascade controlling cellular responses to cytokines and stress. Isoforms p38 α , p38 β , p38 γ and p38 δ have been identified. p38 MAPK is activated by a variety of cellular stresses including osmotic shock, inflammatory cytokines, lipopolysaccharide (LPS), UV light, and growth factors.